



Phone 563.556.8392
Toll-free 800.678.6565
Fax 563.556.5321
4131 Westmark Drive
Dubuque, IA 52002-2627
www.eaglepoint.com

Eagle Point Solution to a Frequently Asked Question

How to Download or Upload to a Trimble TSC1 Controller

Summary:

This document explains the process of downloading or uploading survey data files from and to a Trimble TSC1 (v7.70) controller.

Product: Eagle Point Software™ 2001

Release: 2001 Q4 or 1.4.0 and greater

Platform: All

Related documents:

The tips, solutions, and suggestions outlined in this Eagle Point Solution FAQ are suggested for use at your own risk. The document contents are subject to change without notice. Eagle Point is not responsible or liable for damage or events that may occur as a result of following suggestions from any Eagle Point Technical Support document. Trimble, TDS and Ranger are registered trademarks of Trimble, Inc. AutoCAD is a registered trademark of AutoDesk, Inc. MicroStation is a registered trademark of Bentley Systems, Inc. All other product names are trademarks of their respective holders.

Downloading from the Trimble TSC1 (v 7.70) Survey Controller

Collector

To prepare the controller to download survey data, perform the following steps:

1. Select *Files* from the Main menu and click *Enter*.
2. Select *Import / Export* and click *Enter*.
3. Select *Send ASCII data* and click *Enter*.
4. Verify the communication settings:

File format:	TDS ¹
Port details	
Controller port:	Bottom ²
Baud Rate:	38400 ³
Parity:	None
Job name:	<job name> ⁴
Point name:	Auto-generate ⁴
Start point name:	1
Auto point step size:	1
Point code:	Use point code ⁵

5. Click *Send* (F1).
6. Select the job you desire to download to the computer from the *Select job to send* listing.
7. Select the points in the file that you wish to send from the *Select points* options. For example, select *All points* to download all the points in the selected file.

Desktop

8. Open a project in **Eagle Point**.
9. In the main menu, *Products* → select *Data Collection*.
10. In *Data Collection*, under the *Jobs* menu → select *Download from Collector*.
11. Type in a *Job Name*, select TDS – Coordinate for coordinate data or TDS – Raw for angles and distances.⁶ Select the serial port according to your connections. Make sure the baud rate and parity are set to the same values as the collector. (See figure below)

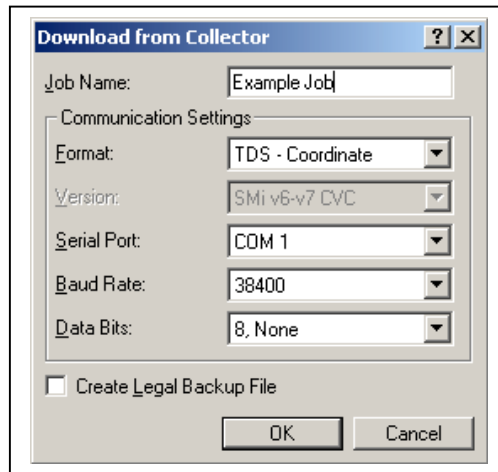
¹ Sokkia SDR33 can also be used.

² Select the port according to your cable connections.

³ A baud rate of 38400 will allow you to transfer the data quicker though you can use a slower rate.

⁴ You can also use *Unchanged* in case that you have already stored ID information for the points.

⁵ You can also select *Use point name*.



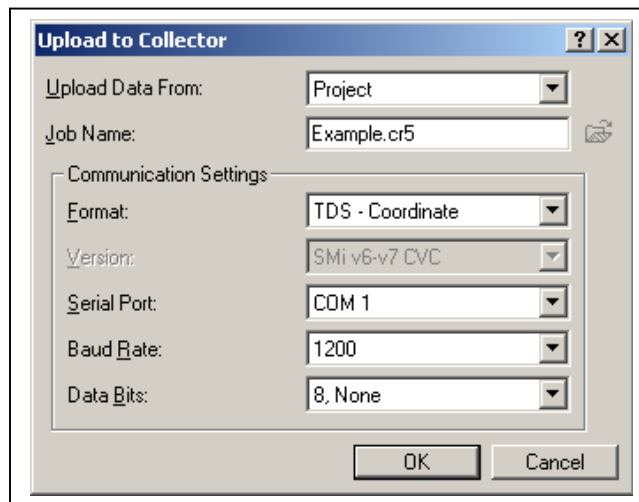
12. Click *Ok* in the dialog box. *Data Collection* is now ready to receive data.
13. In the **TSC1** controller, click *Yes (F1)* in the *Ready to send* dialog to transmit the data to the computer.
14. Once the file is transferred, click *OK (F1)* to return to the *Import / Export* menu in the controller.

You may now edit and reduce the file using the commands in *Data Collection* under the *Jobs* menu with the respective names. Refer to *Edit Instrument File* and *Reduce Job* for more information.

Uploading to a Trimble TSC1 (v 7.70) Survey Controller

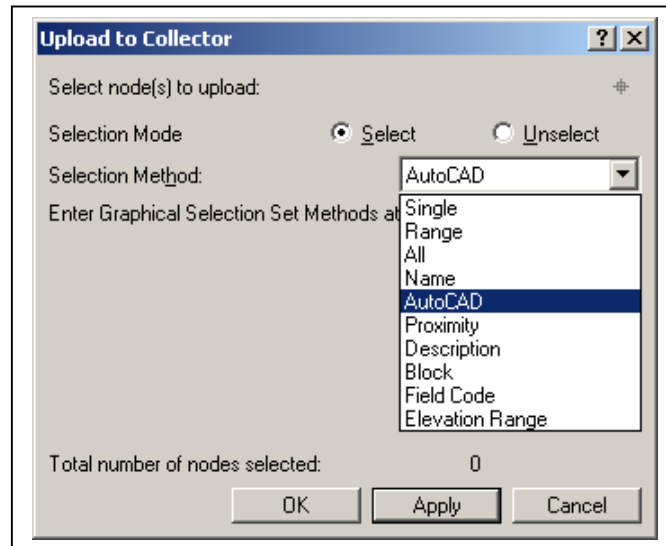
Desktop

1. Open a project in **Eagle Point**.
2. In the main menu, *Products* → select *Data Collection*.
3. In *Data Collection*, under the *Jobs* menu → select *Upload to Collector*.
4. You can upload data from an existing file or directly from the *Eagle Point* project. If you select *Project*, you will need to type in a file name with an extension of CR5. (See figure below)
5. Verify the *Communication Settings*, use a *TDS – Coordinate* format. Set the serial port according to the cable connections. Set the *Baud Rate* to 1200 and *Parity* to 8,none. (See figure below)



⁶ If you have geodetic coordinates, you will need to use Trimble software to download the file and convert it to coordinate grid system.

- Click *Ok* in the dialog box. If you selected *Project* you will now be prompted to select the nodes, you can use any of the selection modes. (See figure below) If you selected *File*, you will be prompted to select the file with the node information to upload.



You will now prepare the controller.

Collector

To prepare the controller to upload survey data, perform the following steps:

- Select *Files* from the Main menu and click *Enter*.
- You will need to create a new job under *Files* → *Job management*.
- To upload the data, Select *Import / Export* and click *Enter*.
- Select *Receive ASCII data* and click *Enter*.
- Verify the communication settings:

File format:	TDS ⁷
Port details	
Controller port:	Bottom ⁸
Baud Rate:	1200
Parity:	None
Job name:	<job name>
Point name:	Unchanged
Point code:	Use point code ⁹

- Click *Receive* (F1).
- Select the job you desire to download to the computer from the *Select job to receive into* listing.

Desktop

- Click *OK* in the *Data Collection* dialog box to transmit the data.
- You will see *Transfer Complete* and *Processing Data* messages in the controller.

⁷ Sokkia SDR33 can also be used.

⁸ Select the port according to your cable connections.

⁹ You can also select *Use point name*.