



Phone 563.556.8392
Toll-free 800.678.6565
Fax 563.556.5321
4131 Westmark Drive
Dubuque, IA 52002-2627
www.eaglepoint.com

Eagle Point Solution to a Frequently Asked Question

How To Install Eagle Point Software version 4.1.0 or greater for use in XP CCE operating environment

Summary:

This document explains the steps that need to be followed when installing Eagle Point software version 4.1.0 or greater for use in the Windows XP CCE environment.

Product: Eagle Point Software™ 2004

Release: 2004 Q1 or 4.1.0 and greater

Platform: All

Related documents: Eagle Point Getting Started manual.

Date created: May 28, 2004

Last revised: October 29, 2004

The tips, solutions and suggestions contained in Eagle Point Solution Papers, any Eagle Point Technical Assistance Document or given by an Eagle Point Technical Assistance Representative are suggested for use at your own risk. Document contents are subject to change without notice. No warranty of any kind, expressed or implied, is made with respect to such tips, solutions, and suggestions except as may be expressly stated in the licensing agreement or other contractual document, including, without limitation, any warranty of merchantability of fitness for a particular purpose. In no event is Eagle Point Software Corporation liable for incidental or consequential damages in connection with or arising out of the use of such tips, solutions and suggestions.

AutoCAD is a registered trademark of Autodesk, Inc. MicroStation is a registered trademark of Bentley Systems, Inc. All other product names are trademarks of their respective holders.

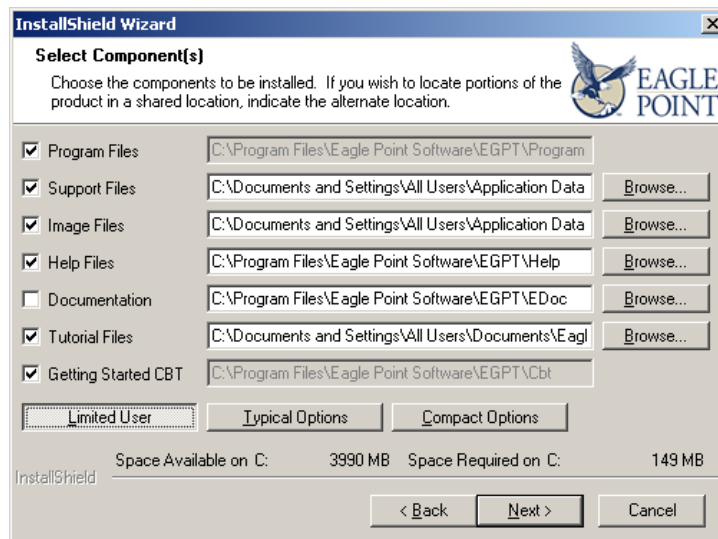
As always, should you have any questions regarding any phase of installation, contact Eagle Point Technical Assistance at (800) 477-0909.

How To Install Eagle Point Software version 4.1.0 or greater for use in XP CCE operating environment

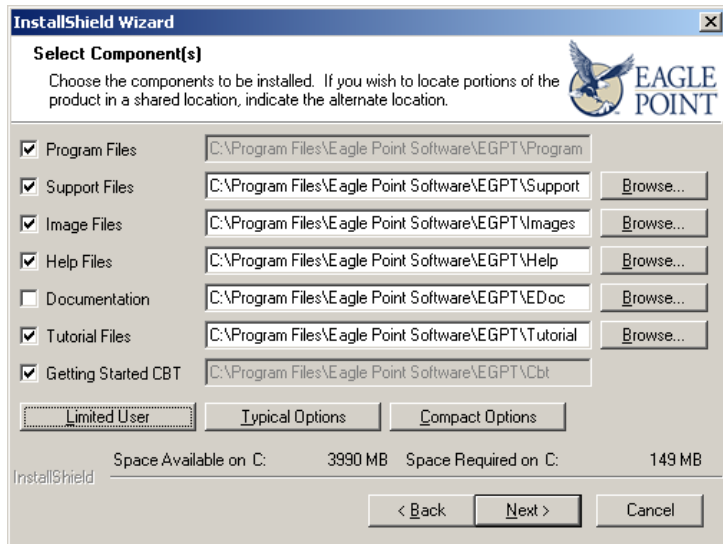
If you are installing Eagle Point 4.1.0 or greater for use in the Windows XP CCE operating environment, you will need to make sure that the Eagle Point Images, Support, and Tutorial directories get installed to the Program Files folder in your computer. This is due to the fact that Eagle Point needs read and write access to the files in these folders.

Make sure that you have administrator rights to proceed with the installation.

In the InstallShield Wizard, after the CAD and Eagle Point configurations and installation path have been selected, the following **Select Component(s)** dialog box will appear:



By default, **Limited User** will be proposed by the installation routine. This will install the components to the “C:\Documents and Settings\...” folder. To adjust the path to “C:\Program Files\...” all you need to do is unselect the **Limited User** button. The dialog box should look as follows.



The paths to the Images, Support and Tutorial folders should read as this:

C:\Program Files\Eagle Point Software\EGPT\Support
C:\Program Files\Eagle Point Software\EGPT\Images
C:\Program Files\Eagle Point Software\EGPT\Tutorial

Once the Wizard has completed the installation, reboot the computer and log in as administrator. Then open Eagle Point to the *Project Manager* (open projects / sub-projects) window. You do not need to do anything here. After the dialog box opens, click on *Exit* to close the application.

When installing single user, you will need to submit an authorization code request. To authorize the software you will need administrator rights once more. You will be able to utilize the software for up to 60 days without needing the authorization codes.

If you are installing a version of Eagle Point prior to 2.3.0 you can use all of the defaults during the installation. The default locations are already pointing to C:\Program Files\Eagle Point Software.