



Phone 563.556.8392
Toll-free 800.678.6565
Fax 563.556.5321
4131 Westmark Drive
Dubuque, IA 52002-2627
www.eaglepoint.com

Eagle Point Solution to a Frequently Asked Question

Installation Procedures for Eagle Point™ modules within the USDA-NRCS Common Computing Environment using Windows XP

Summary:

This document explains how the NRCS can install Eagle Point on Windows XP machines.

Product: Eagle Point Software™ 2002

Release: 2002 Q3 or 2.3.0 and greater

Platform: All

Related documents:

The tips, solutions and suggestions contained in Eagle Point Solution Papers, any Eagle Point Technical Assistance Document or given by an Eagle Point Technical Assistance Representative are suggested for use at your own risk. Document contents are subject to change without notice. No warranty of any kind, expressed or implied, is made with respect to such tips, solutions, and suggestions except as may be expressly stated in the licensing agreement or other contractual document, including, without limitation, any warranty of merchantability of fitness for a particular purpose. In no event is Eagle Point Software Corporation liable for incidental or consequential damages in connection with or arising out of the use of such tips, solutions and suggestions.

AutoCAD is a registered trademark of Autodesk, Inc. MicroStation is a registered trademark of Bentley Systems, Inc. All other product names are trademarks of their respective holders.

As always, should you have any questions regarding any phase of installation, contact Eagle Point Technical Assistance at (800) 477-0909.

HOW

If you are installing Eagle Point 2.3.0 or greater you will need to make the following changes to the Support and Images directory. The following dialog box will appear as you are installing the software. The default location for the support and images are as follows (also shown in the dialog box below):

- C:\Documents and Settings\All Users\Application Data\Eagle Point Software\EGPT\Support
- C:\Documents and Settings\All Users\Application Data\Eagle Point Software\EGPT\Images
- C:\Documents and Settings\All Users\Application Data\Eagle Point Software\EGPT\Tutorial

InstallShield Wizard

Select Component(s)

Choose the components to be installed. If you wish to locate portions of the product in a shared location, indicate the alternate location.

Program Files C:\Program Files\Eagle Point Software\EGPT\Program

Support Files C:\Documents and Setting\All Users\Application Data\ Browse...

Image Files C:\Documents and Setting\All Users\Application Data\ Browse...

Help Files C:\Program Files\Eagle Point Software\EGPT\Help Browse...

Documentation C:\Program Files\Eagle Point Software\EGPT\EDoc Browse...

Tutorial Files C:\Documents and Setting\All Users\Application Data\ Browse...

Getting Started CBT C:\Program Files\Eagle Point Software\EGPT\Cbt

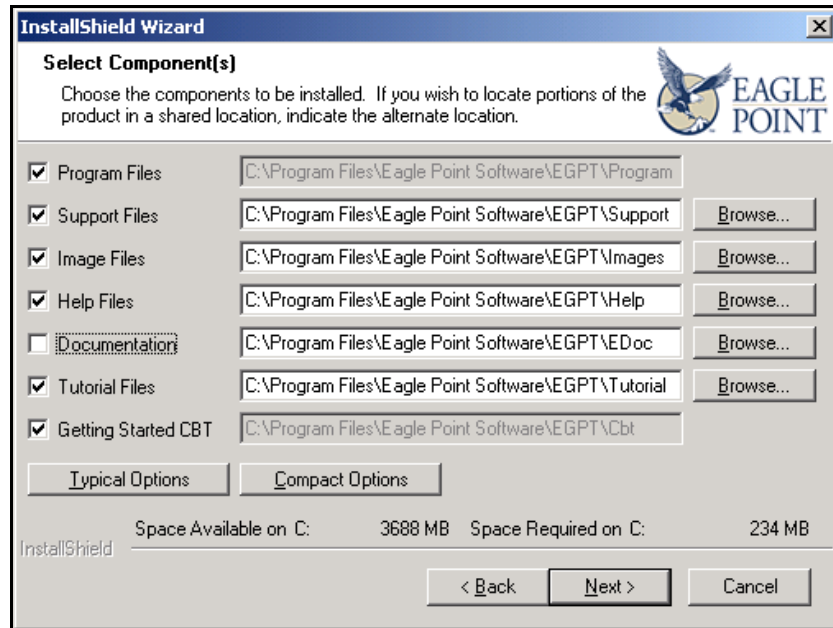
Typical Options Compact Options

Space Available on C: 3688 MB Space Required on C: 234 MB

< Back Next > Cancel

You will need to change the following three paths so that they point to the following directories. This is also shown in the dialog box below.

- C:\Program Files\Eagle Point Software\EGPT\Support
- C:\Program Files\Eagle Point Software\EGPT\Images
- C:\Program Files\Eagle Point Software\EGPT\Tutorial



If you are installing a version of Eagle Point prior to 2.3.0 you can use all of the defaults during the installation. The default locations already point to C:\Program Files\Eagle Point Software.