



Phone 563.556.8392  
Toll-free 800.678.6565  
Fax 563.556.5321  
4131 Westmark Drive  
Dubuque, IA 52002-2627  
www.eaglepoint.com

## Eagle Point Solution to a Frequently Asked Question

### How to configure Bluetooth on the Jett•XL for your Bluetooth-enabled Instrument

#### Summary:

This document explains the process of preparing your SMI Jett•XL to communicate wirelessly via Bluetooth to a Bluetooth-enabled surveying instrument. This paper does not assist you in configuring your survey instrument and requires that it is powered on and is currently configured for Bluetooth serial communication. You may also need a passkey for your instrument. Refer to your instrument documentation for more information.

**Product:** Eagle Point SMI Field Solutions

**Release:** SMI version 8.0M

**Platform:** Jett•XL

**Related documents:** SMI Reference Manual, Survey Instrument user manual for Bluetooth configuration instructions.

The tips, solutions and suggestions contained in Eagle Point Solution Papers, any Eagle Point Technical Assistance Document or given by an Eagle Point Technical Assistance Representative are suggested for use at your own risk. Document contents are subject to change without notice. No warranty of any kind, expressed or implied, is made with respect to such tips, solutions, and suggestions except as may be expressly stated in the licensing agreement or other contractual document, including, without limitation, any warranty of merchantability of fitness for a particular purpose. In no event is Eagle Point Software Corporation liable for incidental or consequential damages in connection with or arising out of the use of such tips, solutions and suggestions.

Jett is a registered trademark of Two Technologies, Inc. AutoCAD is a registered trademark of Autodesk, Inc. MicroStation is a registered trademark of Bentley Systems, Inc. All other product names are trademarks of their respective holders.

As always, should you have any questions regarding any phase of installation, contact Eagle Point Technical Assistance at (800) 477-0909.

Proceed through the following steps to configure and pair your surveying instrument for use with the Jett•XL such that it may be able to be controlled by SMI.

1. Tap on the Bluetooth Icon in the system tray of the Jett•XL.



2. If the Transmitter is not turned on, tap the ON button.

Bluetooth status : OFF  
Turn Bluetooth :

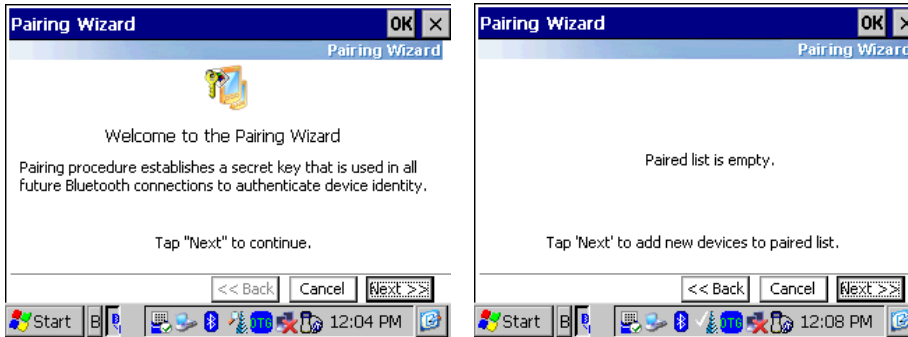
3. Tap on the Pairing Wizard shortcut.

Bluetooth status : ON  
Turn Bluetooth :

Device address : BD:B2:03:20:00:03

[Bluetooth Connection Manager](#)

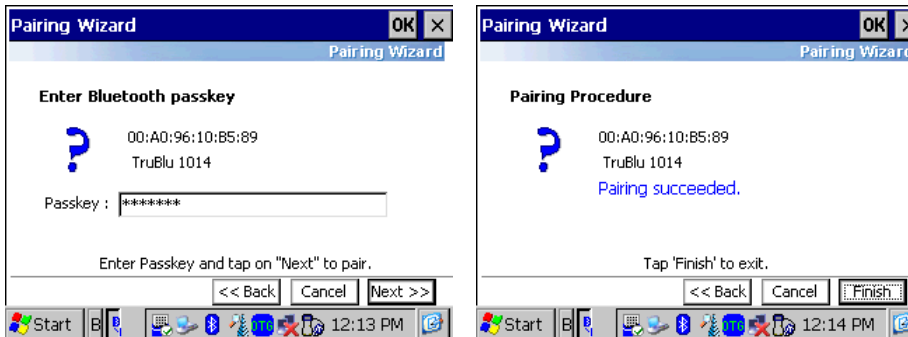
- This displays the Pairing Wizard dialog box. Tap Next to continue.



- Select All devices and tap next. There should be a Found Device in the list. Highlight it and tap next. If there is nothing to select in the list tap the Refresh link. If there are still no devices displayed in the list make sure your instrument is on and the Bluetooth is enabled.



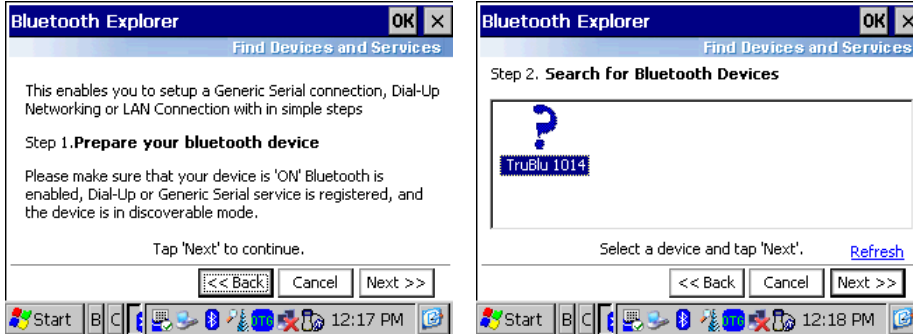
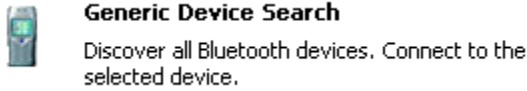
- Enter the Passkey for your device. You may need to obtain this information from your instrument documentation. If you are using an SMI Flex GPS system with NavCom TruBlu adapter(s), the passkey is the word **default**. Click Finish.



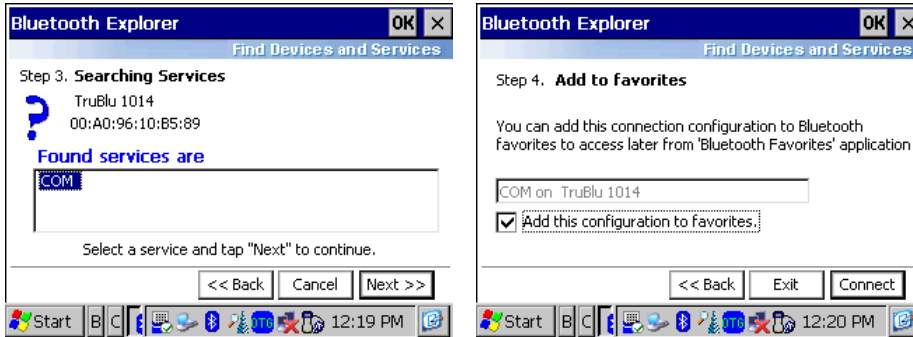
- Tap the Bluetooth Connection Manager link.

Bluetooth status : **ON**  
 Turn Bluetooth :   
 Device address : BD:B2:03:20:00:03  
[Bluetooth Connection Manager](#) [Pairing wizard](#)

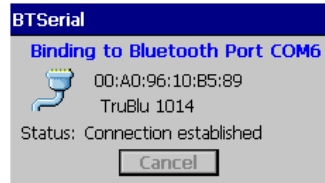
8. Tap Generic Device Search. This displays the Bluetooth Explorer dialog box.



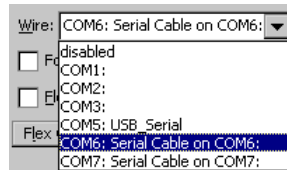
9. Tap on your device and tap next. Choose the service (e.g. COM or Serial) and continue. You can also name this instrument if you have more than one. Be sure to check the box to add this configuration to your favorites and tap Connect.



You should see a brief message box stating that the instrument is binding and that the connection has been established.



Close all of the Bluetooth dialog boxes, and from within SMI, select File → Settings and select the COM port that was bonded. In most cases, this will be COM 6.



**IMPORTANT NOTE:** If your Jett-XL falls asleep (suspends), moves out of the Bluetooth range (>30 ft. under ideal conditions), or loses connection with the instrument you have to go back into the Bluetooth Connection Manager → My Bluetooth Favorites → <Highlight Instrument> then select File → Connect. Close the Bluetooth Manager, open SMI if it is closed, and double check the settings to make sure COM6 is still selected. SMI should be ready to communicate with your instrument again.