

Eagle Point Solution to a Frequently Asked Question

How to switch between a node and a network license in Eagle Point (v3.2.0 or later)

Summary: This document explains the process by which a user can switch his Eagle Point Software from running in a node license (local) to a network mode or vice versa.

Product: Eagle Point Software™ 2003

Release: 2003 Q2 or 3.2.0 and greater

Platform: All

Related documents: Eagle Point documentation

Date Created: May 17, 2004

Last Revision: May 17, 2004

The tips, solutions and suggestions contained in Eagle Point Solution Papers, any Eagle Point Technical Assistance Document or given by an Eagle Point Technical Assistance Representative are suggested for use at your own risk. Document contents are subject to change without notice. No warranty of any kind, expressed or implied, is made with respect to such tips, solutions, and suggestions except as may be expressly stated in the licensing agreement or other contractual document, including, without limitation, any warranty of merchantability of fitness for a particular purpose. In no event is Eagle Point Software Corporation liable for incidental or consequential damages in connection with or arising out of the use of such tips, solutions and suggestions.

AutoCAD is a registered trademark of Autodesk, Inc. Microstation is a registered trademark of Bentley Systems, Inc. All other product names are trademarks of their respective holders.

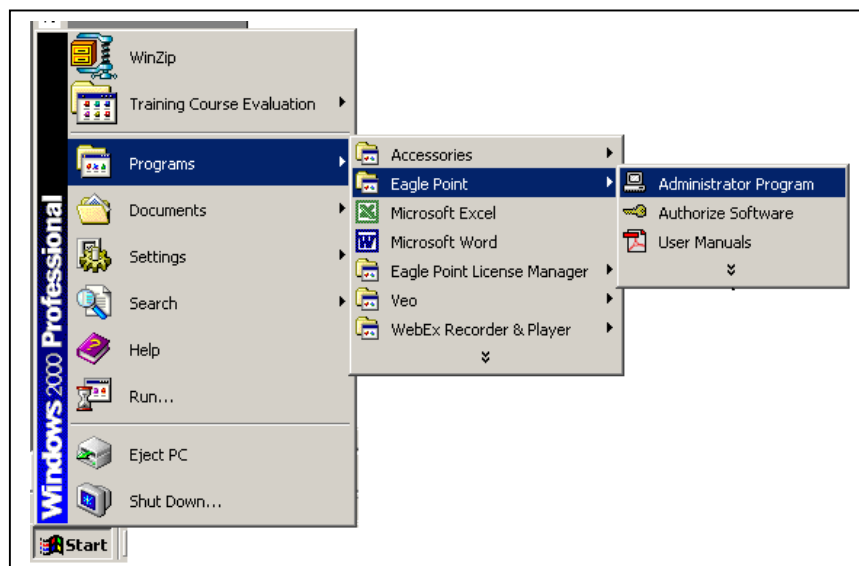
As always, should you have any questions regarding any phase of installation, contact Eagle Point Technical Assistance at (800) 477-0909.

How to switch between a node and a network license in Eagle Point (v3.2.0 or later)

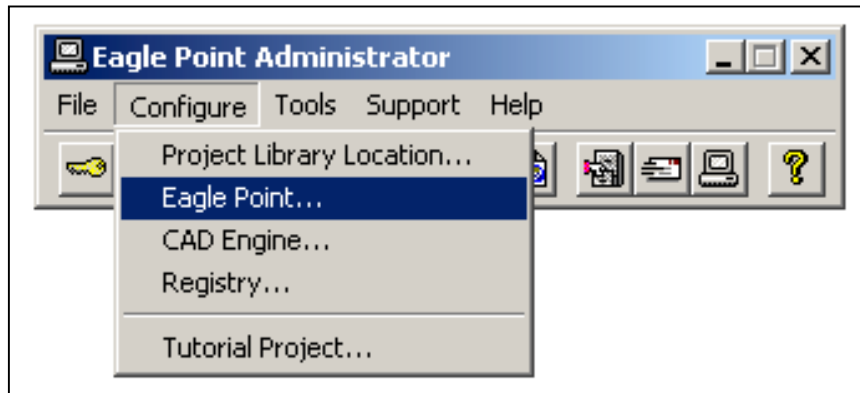
In release 3.2.0 of Eagle Point Software, a new option was added to allow users to switch easily between checking out licenses from locally installed keys and a network license manager.

Note: *If you are switching from a Network License to a Node License, you will need authorization codes specific to your computer to be able to run in the node license mode. If you are switching from Node License to a Network License and running Windows NT/2000/XP you will need to set an Environment Variable in your system to direct the software to the location of your Network License Manager.*

1. Close out of Eagle Point and AutoCAD if you're currently running them.
2. From the Windows Start menu, select Programs → Eagle Point → Administrator Program



3. This will open the Eagle Point Administrator Program. From the Configure menu, select Eagle Point.



4. In the Configure Eagle Point dialog box, under Launch Options, select the desired option. To run from the Eagle Point License Manager when connected to the network, select TCP/IP. If you are not connected to your network, select Node.

