



Phone 563.556.8392  
Toll-free 800.678.6565  
Fax 563.556.5321  
4131 Westmark Drive  
Dubuque, IA 52002-2627  
www.eaglepoint.com

## Eagle Point Solution to a Frequently Asked Question

### How to transfer data between a Topcon FC-100/1000 Data Collector and Eagle Point

#### Summary:

This document explains the process of creating a format within Topcon's Link program, which can be used for transferring surveying data between a Topcon Data Collector and Eagle Point Data Collection.

**Product:** Eagle Point Software™ 2001

**Release:** 2001 Q4 or 1.4.0 and greater

**Platform:** All

**Related documents:** User Manual for Topcon Link

The tips, solutions and suggestions contained in Eagle Point Solution Papers, any Eagle Point Technical Assistance Document or given by an Eagle Point Technical Assistance Representative are suggested for use at your own risk. Document contents are subject to change without notice. No warranty of any kind, expressed or implied, is made with respect to such tips, solutions, and suggestions except as may be expressly stated in the licensing agreement or other contractual document, including, without limitation, any warranty of merchantability of fitness for a particular purpose. In no event is Eagle Point Software Corporation liable for incidental or consequential damages in connection with or arising out of the use of such tips, solutions and suggestions.

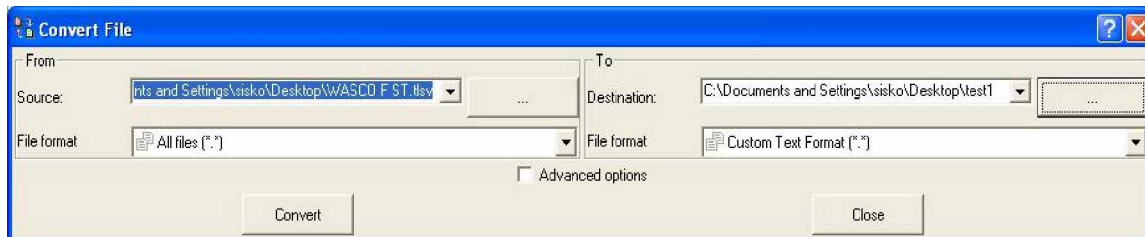
AutoCAD is a registered trademark of Autodesk, Inc. MicroStation is a registered trademark of Bentley Systems, Inc. Topcon Top Link, TopSURV and FC-100/1000 are property of Topcon, Inc. All other product names are trademarks of their respective holders.

As always, should you have any questions regarding any phase of installation, contact Eagle Point Technical Assistance at (800) 477-0909.

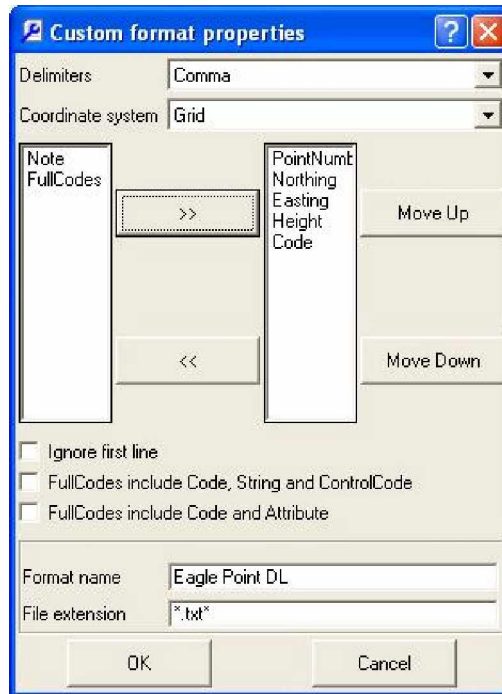
#### Creating Custom Formats within Topcon Link for Eagle Point:

Custom formats are required, as the default formats provided by Topcon Link do not include the exact format. Also, it is good to differentiate the formats used for Eagle Point so that they are easily selected. Once you use a custom format, it will be available the next time you use Topcon Link.

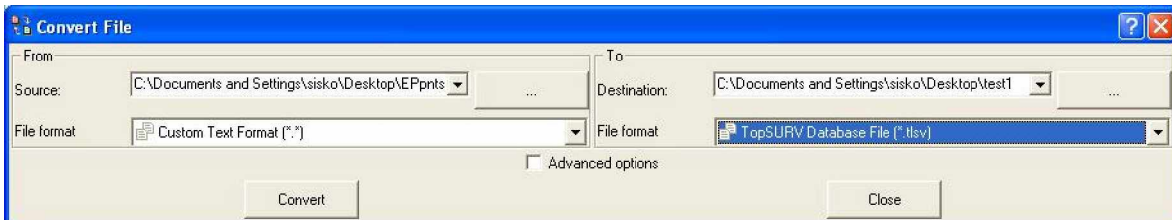
1. Using Topcon Link, we need to create a custom format used for downloading data from the FC-100/1000 to Eagle Point.  
Select File à Convert File.
  - a. Select your Source and File Format under From.
  - b. Browse to your destination for the file.
  - c. Under File Format, select Custom Text Format.
  - d. Click on Convert. This will display the Custom format properties dialog box below:



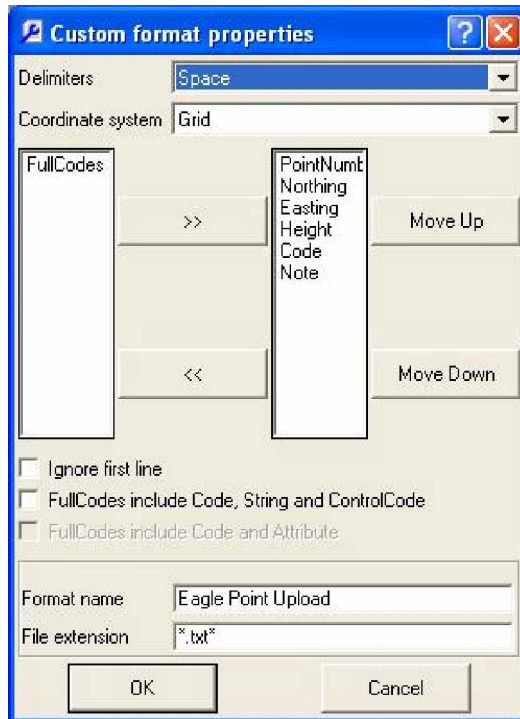
2. Create Custom Text Format for downloading.
  - a. Select Comma as the delimiter, and a Coordinate System of Grid.
  - b. Highlight Northing and click on ">>".
  - c. Do the same for Easting, Height, and Code in that order.
  - d. Type in *Eagle Point Download* for format name.
  - e. Type in ".txt" for File Extension.
  - f. Click on OK.



3. We now need to create a custom format that will be used to take data from Eagle Point (i.e. Upload) after the comma's have been edited out that can be converted to a TopSURV Database file. Select Convert File From Eagle Point to TopSURV Database File.
  - a. For the **Source**, select the file that was exported from Eagle Point.
  - b. For the **File Format**, select Custom Text Format.
  - c. Browse out to a location to save the file for the Destination.
  - d. Select TopSURV Database File for the File Format.
  - e. Click on Convert.



4. Create Custom Text Format for uploading.
  - a. Select Space as the delimiter, and a Coordinate System of Grid.
  - b. Highlight Northing and click on ">>".
  - c. Do the same for Easting, Height, Code and Note in that order.
  - d. Type in *Eagle Point Upload* for format name.
  - e. Type in ".txt" for File Extension.
  - f. Click on OK.



**Procedures for transferring data between a Topcon FC-100/1000 and Eagle Point**

**Importing Points from Eagle Point to Data Collector:**

1. Convert File into Eagle Point format.
  - a. In Topcon Link, go to File à Convert File.
  - b. In the **From** section, browse out to the file for the Source and select the TopSURV Database File (.tlsv) File Format.
  - c. In the **To** section, select a location to save the converted file to and select the Eagle Point format created earlier.
  - d. Click on Convert.
  - e. A dialog box should pop up saying "The file was successfully converted."
2. Import file into Eagle Point.
  - a. Create a new Eagle Point Project.
  - b. In Data Collection, go to Jobs à Import ASCII file.
  - c. Type in a Job Name.
  - d. Browse out to the location of the converted file.
  - e. Select Coordinate for the Format.
  - f. Click OK.

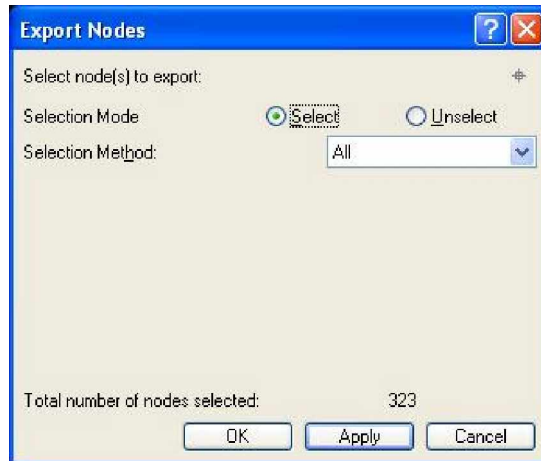


3. Reduce File into Eagle Point.
  - a. In Data Collection, go to File à Reduce.
  - b. Highlight the job you want to reduce and click OK.
  - c. You may get some errors in the query warnings dialog box. You may need to:

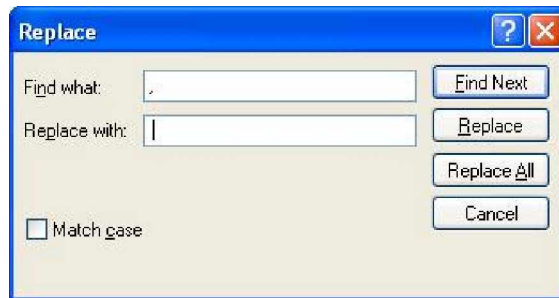
- i. Add in a field code if one isn't found.
  - ii. Shorten the field code if it is too long.
- d. If nothing appears in the drawing, perform a *zoom extents* within your CAD graphic.

**Exporting Points From Eagle Point to Data Collector:**

1. Export Points from Eagle Point.
  - a. In Data Collection, go to Jobs à Export Nodes.
  - b. Browse out to location you would like to save this file and name the file.
  - c. Select Coordinate for Format.
  - d. Click OK.
  - e. Choose the points you want to export using various selection methods (range, description, etc.)
  - f. Press Apply to select Nodes by the selection method.
  - g. Press OK to export the Nodes to the file.



2. Edit file from Eagle Point
  - a. Open file that was exported from Eagle Point with Notepad.
  - b. Under the Edit menu, select Replace.
  - c. In the **Find What** field type in a comma (",").
  - d. In the **Replace With** field type in a space (" ").
  - e. Click on Replace All.
  - f. Save file in Notepad and close.



3. Convert file from Eagle Point format to Topcon format.
  - a. Open Topcon Link.
  - b. Go to File à Convert File
  - c. In the **From** section, for the Source select the file that you just edited. For the File Format, select the Eagle Point format.
  - d. In the **To** section, select the destination for the converted file and select the (.tsv) format for the File Format.
  - e. Click on Convert.
4. Export File to data collector.