

Eagle Point Solution to a Frequently Asked Question

How to add a Windows Environment Variable (Windows NT/2000/XP)

Summary: This document explains the process of adding an environment variable to the Windows system configuration. This has to be done at the workstation (local) machine where Eagle Point software is being run if you have a Network License Manager.

Product: Eagle Point Software™ 2001

Release: 2001 Q4 or 1.4.0 and greater

Platform: Windows NT/2000/XP

Related documents: Microsoft documentation/help

Date created: November 25, 2003

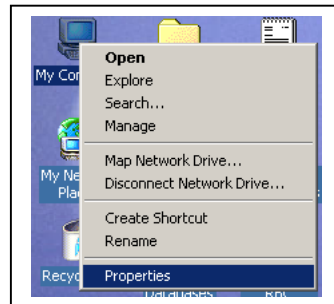
Last revised: May 17, 2004

The tips, solutions and suggestions contained in Eagle Point Solution Papers, any Eagle Point Technical Assistance Document or given by an Eagle Point Technical Assistance Representative are suggested for use at your own risk. Document contents are subject to change without notice. No warranty of any kind, expressed or implied, is made with respect to such tips, solutions, and suggestions except as may be expressly stated in the licensing agreement or other contractual document, including, without limitation, any warranty of merchantability of fitness for a particular purpose. In no event is Eagle Point Software Corporation liable for incidental or consequential damages in connection with or arising out of the use of such tips, solutions and suggestions.

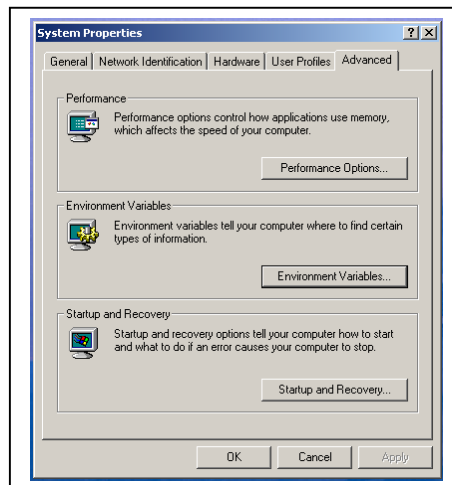
AutoCAD is a registered trademark of Autodesk, Inc. MicroStation is a registered trademark of Bentley Systems, Inc. All other product names are trademarks of their respective holders.

As always, should you have any questions regarding any phase of installation, contact Eagle Point Technical Assistance at (800) 477-0909.

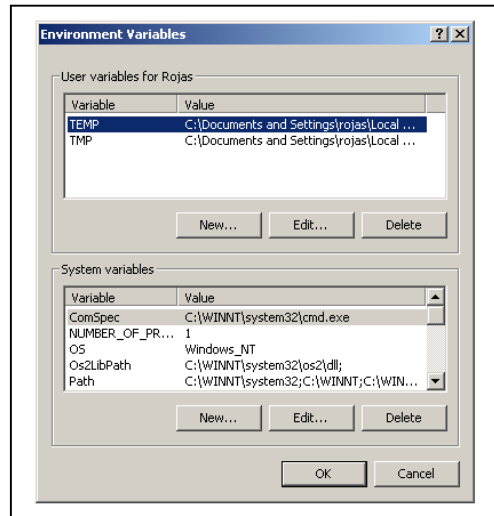
1. Right-click on the My Computer icon on the desktop and then on Properties.



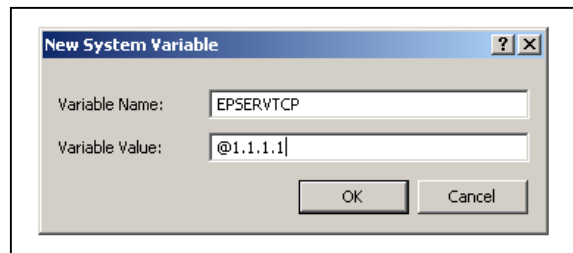
2. Then click on the Advanced tab and the Environment Variables button.



- Environment Variables can be set for both System and User. It is recommendable to add the variable at the System level if the computer is shared by more than one user (you would need to have Administrator rights to the computer to do this). Click on New under System Variables.



- The Variable Name is EPSEVRTCP, for the Variable Value you will need to type the '@' symbol followed by the IP Address or Machine Name where the Eagle Point Network License Manager was installed. Example, @<Server IP Address> or @<Server Machine Name>.



- Click OK to close out of the New System Variable or New User Variable. Click OK to close out of the Environment Variables dialog box. Click OK to close out of the System Properties dialog box.