

Plant Database by Eagle Point

Information in this manual is subject to change without notice and does not represent a commitment on the part of the vendor. The software described in this manual is furnished under a license agreement and may be used or copied only in accordance with the terms of the agreement.

Eagle Point has carefully prepared this program package, including research, development, and testing to ascertain its effectiveness and accuracy. However, no warranty of any kind is made with respect to this program package or its related material, except as may be expressly stated in the licensing agreement or other contractual document. In no event is Eagle Point liable for incidental or consequential damages in connection with, or arising out of, the furnishing, performance, or use of this program package.

The installation program used to install Eagle Point software, InstallShield, is licensed software provided by InstallShield Software Corporation.

ColorFast™, RoadCalc™, LANDCADD™, Virtual Simulator™, as well as the ColorFast™ and Eagle Point logos, are unregistered trademarks of Eagle Point.

AutoCAD® is a registered trademark of Autodesk, Inc.

MicroStation® is a registered trademark of Bentley Systems, Inc.

Windows® and DOS® are registered trademarks of Microsoft Corporation. All other registered or unregistered trademarks are the property of their respective holders.

Copyright © Q3, 2005, by Eagle Point. All rights reserved.

PLANT DATABASE

TABLE OF CONTENTS

1 Data	1
Display	2
Print	3
Print Setup	3
Import from Name	5
Export to Name	5
Exit	6
2 View	7
Record Information	8
General	9
Climate	11
Conditions	12
Growth	13
Maintenance	14
Planting Sizes	15
New Planting Size	16
Characteristics	19
Uses	20
Zones	21
Display Units	22
3 Records	25
Purge	26
Recover	26
4 Browse	27
Find	28
Show All	29

<i>Show Selected</i>	29
5 CAD Link	31
<i>Show Plants</i>	32
<i>Find Plant Records</i>	32
Index	33

DATA

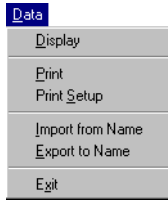


Figure 1-1 Data Menu

In this chapter:

<i>Display</i>	2
<i>Print</i>	3
<i>Print Setup</i>	3
<i>Import from Name</i>	5
<i>Export to Name</i>	5
<i>Exit</i>	6

CHAPTER

1

Display

PLANT DATABASE ⇨ DATA ⇨ DISPLAY

KEY-IN COMMAND: pddi spl ay

When you select Display from the Data menu (Figure 1-1 on page 1), the Plant Data window (below) is displayed. This window contains an itemized list of available plants. Each plant is listed by scientific name, common name and code name. When you click on one of the three column headers associated with a category, the entire database will be organized alphabetically based on the column selected.

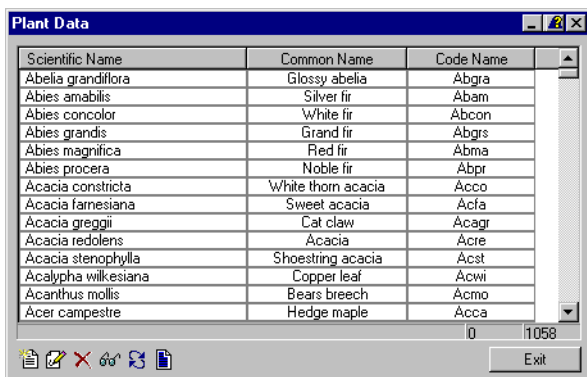









Figure 1-2 Plant Data Window

Plant Data Window Definitions

Option	Icon	Function
Scientific Name		The scientific name is the Latin name by which each plant is scientifically categorized.
Common Name		This is the common name to which a plant is referred in everyday language.
Code Name		The code name is an abbreviated name for the plant that may be used for labeling purposes at a later time.
New Record		The New Record icon displays the Add New dialog box where data is input for new plants.
Modify Record		The Modify Record icon displays the Modify dialog box where data for a selection can be modified.
Delete Record		The Delete Record icon allows you delete a selected item or items.

Plant Data Window Definitions

Option	Icon	Function
View Record		The View Record icon displays the View Record dialog box where the data for a particular section can be viewed.
Refresh Data		The Refresh Data icon allows you to refresh the list after you have modified the list.
Select All Data		The Select All Data icon allows you to select the entire list.

 You also have the option to right click on any plant name within the Plant Data window (Figure 1-2 on page 2) in order to view, modify, and/or delete that entry.

Print

PLANT DATABASE ⇨ DATA ⇨ PRINT

KEY-IN COMMAND: `pdprint`

ICON: 

The Print command allows you to print a hard copy of the database or selections from the database. In order to print, you must choose select all or make individual selections from the Plant Data window (Figure 1-2 on page 2) and click on the print icon (above). The information for the plants you have selected will be presented in Microsoft Word or Word Viewer. You are then able to select Print from the File menu in Microsoft Word or edit your selection to meet your output needs. For more information, see *Print Setup* on page 3.

Print Setup

PLANT DATABASE ⇨ DATA ⇨ PRINT SETUP

KEY-IN COMMAND: `pdprintsetup`

Select the Print Setup command to change your printer options. A standard Windows Print Setup dialog box (below) is displayed.

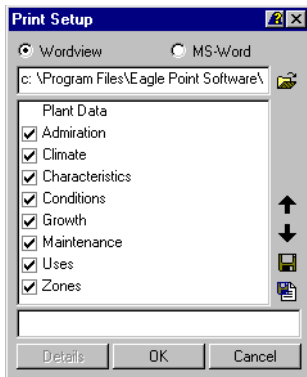







Figure 1-3 Print Setup Dialog Box

Print Setup Dialog Box Definitions

<i>Option</i>	<i>Icon</i>	<i>Function</i>
Wordview		This allows you to select output for selected items.
MS-Word		This allows you to select output for selected items. This option is only available if you have installed Microsoft Word.
Select Print File		The Select Print File icon allows you to specify default file location and name.
Place Topic Above		The Place Topic Above icon allows you to select an item in the list and move it above the previous topic.
Place Topic Below		The Place Topic Below icon allows you to select an item in the list and move it below the following topic.
Save as Global Setup		The Save as Global Setup icon allows you to save the current configuration as your default.
Import Global Setup		The Import Global Setup icon allows you to reload previously saved settings.
Details		The Details button is active when a title is highlighted. This feature allows you to modify sub headings under each category.

Import from Name

PLANT DATABASE ⇨ DATA ⇨ IMPORT FROM NAME

KEY-IN COMMAND: pdi mport nam

The Import from Name command allows you to import a file from other plant database programs into **Plant Database**. The Import Name File dialog box (below) is displayed, allowing you to make your selection.

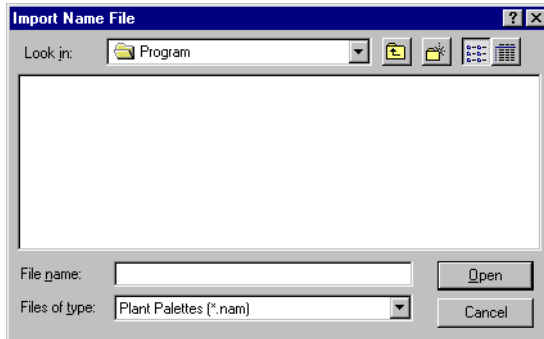


Figure 1-4 Import Name File Dialog Box

Export to Name

PLANT DATABASE ⇨ DATA ⇨ EXPORT TO NAME

KEY-IN COMMAND: pdexport nam

The Export to Name file is used to create plant “palettes” utilized later when working with the **Landscape Design** module. Use the **Plant Database** search engine for assistance in building a custom plant list. For more information about using the search engine see *Find* on page 28.

Exit

PLANT DATABASE ↗ DATA ↗ EXIT

KEY-IN COMMAND: pdexi t

Select Exit to close ***Plant Database***.

VIEW

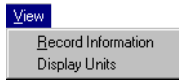
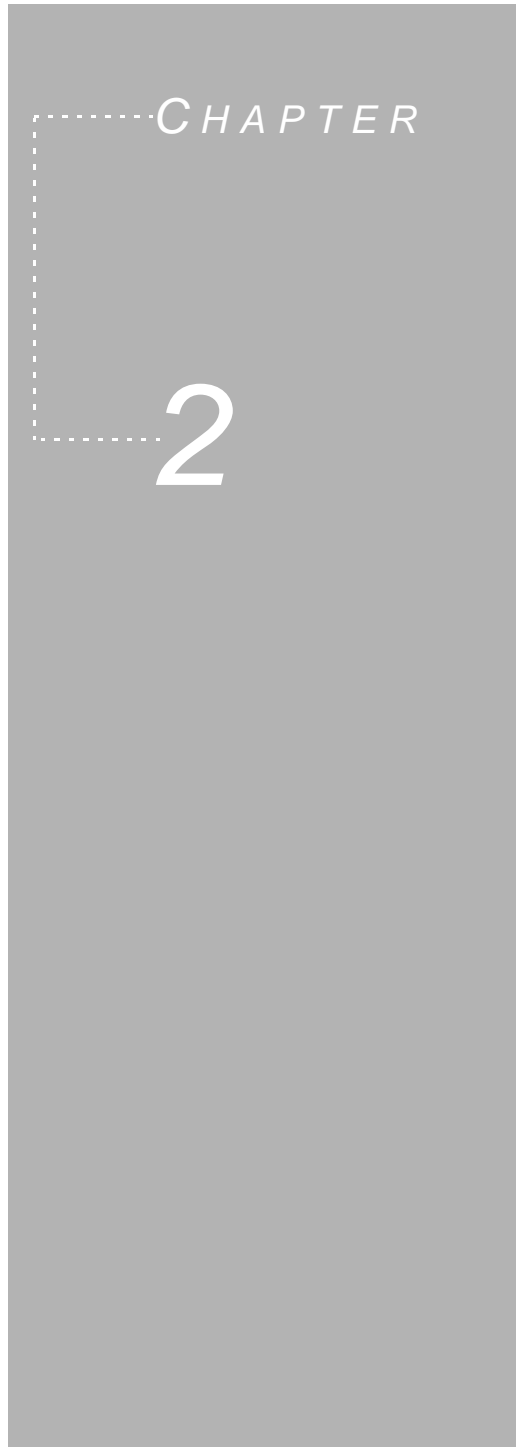


Figure 2-1 View Menu

In this chapter:

<i>Record Information</i>	8
<i>Display Units</i>	22



Record Information

PLANT DATABASE ⇨ VIEW ⇨ RECORD INFORMATION

KEY-IN COMMAND: pdvi ew

The Record Information command allows you to display the View Record dialog box (below). The View Record dialog box displays information about the plant including characteristics, climate, color, conditions, growth, maintenance, textures and uses. There are several tabs from which to choose that help you determine when, where and how you use a plant.

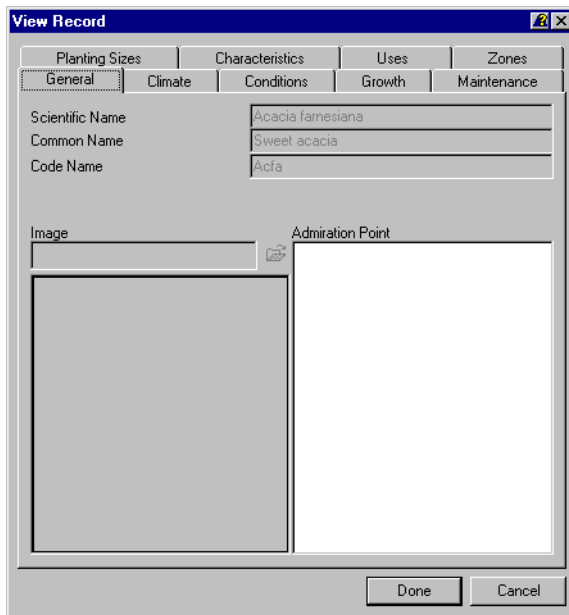


Figure 2-2 View Record Dialog Box

View Record Dialog Box Definitions

Option	Function
General	The General tab (Figure 2-3 on page 10) allows you to specify and view general information about a selected plant.
Climate	The Climate tab (Figure 2-5 on page 11) indicates areas which have favorable climates in which to grow a selected plant.
Conditions	The Conditions tab (Figure 2-6 on page 12) displays the most favorable conditions in which to gain optimal growing results for the selected plant including sun exposure and soil conditions.

View Record Dialog Box Definitions

<i>Option</i>	<i>Function</i>
Growth	The Growth tab (Figure 2-7 on page 13) displays the typical maximum height and width of the plant, growth rate, growth pattern and growth form.
Maintenance	The Maintenance tab (Figure 2-8 on page 14) includes information about the selected plant's maintenance needs such as detriments and tolerances.
Planting Sizes	The Planting Sizes tab (Figure 2-9 on page 15) includes information about a plant's available sizes.
Characteristics	The Characteristics tab (Figure 2-12 on page 19) provides information regarding specific attributes which lend themselves to determine the aesthetics of a particular plant.
Uses	The Uses tab (Figure 2-13 on page 20) specifies common uses of the selected plant.
Zones	The Zones tab (Figure 2-14 on page 21) shows which zones have favorable growing conditions for a particular plant.

General

PLANT DATABASE ⇨ VIEW ⇨ RECORD INFORMATION ⇨ GENERAL TAB

The General tab in the View Record dialog box (Figure 2-3 on page 10) displays general information about a selected plant. The scientific name, the common name, and the code

name are listed, as well as a visual image of the plant and an admiration point. This table is beneficial in isolating a particular entry.

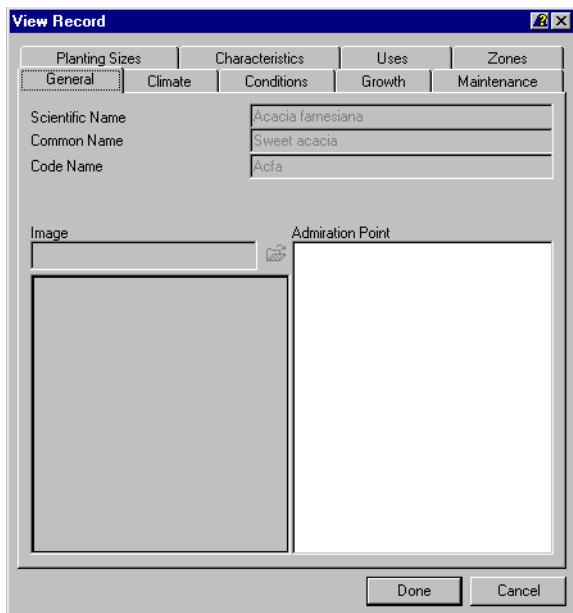



Figure 2-3 View Record Dialog Box–General Tab

Figure 2-4 View Record Dialog Box–General Tab Definitions

<i>Option</i>	<i>Icon</i>	<i>Function</i>
Scientific Name		The scientific name is the Latin name by which all plants are scientifically categorized.
Common Name		This is the common name to which all plants are referred in everyday language.
Code Name		The code name is an abbreviated name for the plant that may be used for labeling purposes at a later time.
Image		The Image edit field displays the file name of the bitmap image of the selected plant in the review area.
Find Image		Click on the Find Image icon to search for or to browse to an image.
Admiration Point		This list box indicates a key desirable element of the plant.

Climate

PLANT DATABASE ⇨ VIEW ⇨ RECORD INFORMATION ⇨ CLIMATE TAB

The Climate tab in the View Record dialog box (below) shows the areas which have the most ideal climates suitable for the growth of the selected plant. The warmest and coldest temperatures of that climate are also listed.

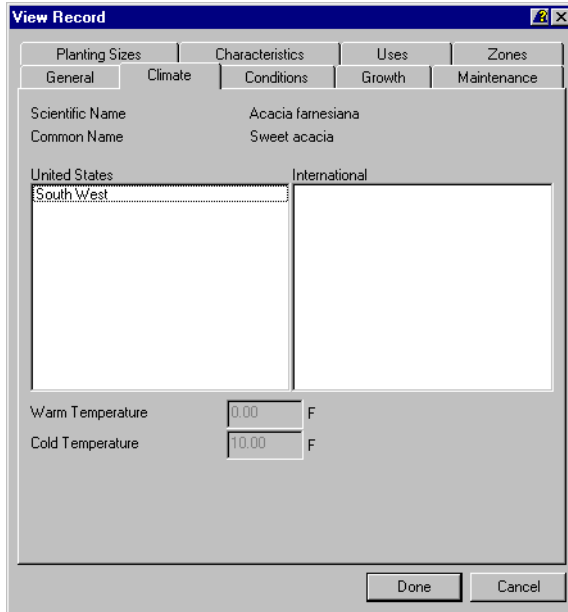


Figure 2-5 View Record Dialog Box–Climate Tab

View Record Dialog Box–Climate Tab Definitions

Option	Function
United States	The United States list box lists the regions within the United States that have suitable climate to grow this plant.
International	The International list box lists the international regions where climate is suitable to grow this plant.
Warm Temperature	This edit field displays the warmest temperature that the plant can tolerate.
Cold Temperature	This edit field displays the coldest temperature that the plant can tolerate.

Chapter 2: View

Conditions

PLANT DATABASE ⇨ VIEW ⇨ RECORD INFORMATION ⇨ CONDITIONS TAB

The Conditions tab in the View Record dialog box (below) displays the most favorable conditions in which to gain optimal growing results for the selected plant. Soil conditions, sun exposure, miscellaneous conditions and tolerances are features listed within this tab.

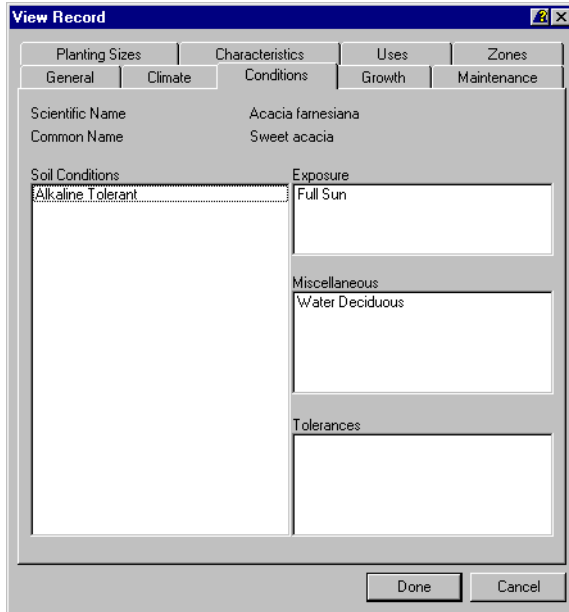


Figure 2-6 View Record Dialog Box—Conditions Tab

View Record Dialog Box – Conditions Tab

Option	Function
Soil Conditions	The Soil Conditions list box displays the type of soil where the plant grow with the greatest success.
Exposure	The Exposure list box displays the amount of sun exposure the plant requires to have the greatest growth potential.
Miscellaneous	The Miscellaneous list box displays miscellaneous items that may assist in plant selection.
Tolerances	The Tolerances list box displays conditions the plant can tolerate in a the landscape.

Growth

PLANT DATABASE ⇨ VIEW ⇨ RECORD INFORMATION ⇨ GROWTH TAB

The Growth tab in the View Record dialog box (below) displays information regarding growth habits of the selected plant. This is helpful when designing so you know whether a plant's physical features are suitable to a particular location. Such features as height, growth rate and growth form are key in producing a specific visual presentation.

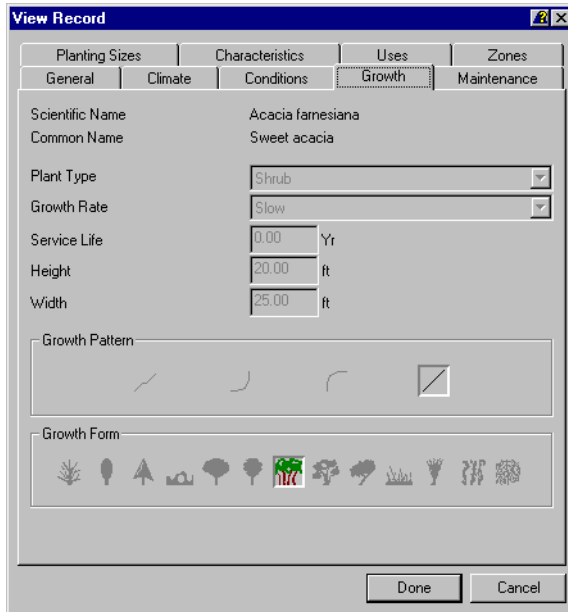


Figure 2-7 View Record Dialog Box–Growth Tab

View Record Dialog Box–Growth Tab

Option	Function
Plant Type	The Plant Type drop list displays the defining type for the selected plant (deciduous tree, grass, conifer, etc.).
Growth Rate	The Growth Rate drop list shows the typical rate of growth of the plant under normal conditions.
Service Life	The Service Life edit field shows the typical service life of the plant under normal conditions.
Height	The Height edit field shows the typical maximum height of the plant under normal conditions.
Width	The Width edit field shows the typical maximum width of the plant under normal conditions.

Chapter 2: View

View Record Dialog Box–Growth Tab

Option	Function
Growth Pattern	The growth pattern refers to the way the plant grows throughout its lifetime. Choose from quickly in early years, steady, slow starter, etc.
Growth Form	The selected Growth Form option shows the typical growth habit of the crown of the plant.

Maintenance

PLANT DATABASE ⇨ VIEW ⇨ RECORD INFORMATION ⇨ MAINTENANCE TAB

The Maintenance tab in the View Record dialog box (below) includes information about the selected plant's maintenance needs. Such information as detriments, tolerances, and water requirements are essential in determining the amount of care needed and whether characteristics of a particular location are suitable to maintaining the plant's life.

The screenshot shows the 'View Record' dialog box with the 'Maintenance' tab selected. The 'General' sub-tab is active, displaying the following information:

- Scientific Name: Acacia farnesiana
- Common Name: Sweet acacia
- Water Requirements: Low Water Use (dropdown menu)
- Transplanting: Easy (dropdown menu)
- Detriments: (empty text area)
- Planting Time: September, October, November (dropdown menu)
- Transplanting Time: (empty text area)
- Fertilize Time: (empty text area)
- Pruning Time: (empty text area)

Buttons for 'Done' and 'Cancel' are located at the bottom right of the dialog.

Figure 2-8 View Record Dialog Box–Maintenance Tab

View Record Dialog Box–Maintenance Tab Definitions

Option	Function
Water Requirements	The Water Requirements drop list indicates the amount of water required by the plant to survive.
Transplanting	The Transplanting drop list displays the degree of difficulty in transplanting this plant.

View Record Dialog Box–Maintenance Tab Definitions

Option	Function
Detriments	The Detriments list displays the types of maintenance problems the plant commonly has including susceptibility to disease or insect infestation.
Planting Time	The Planting Time list displays the time of year best suited to plant this plant.
Transplanting Time	The Transplanting Time list indicates the time of year best suited to transplant this plant.
Fertilize Time	The Fertilize Time list indicates the time of year best suited to fertilize this plant.
Pruning Time	The Pruning Time list indicates the time of year best suited to prune this plant.

Planting Sizes

PLANT DATABASE ⇨ VIEW ⇨ RECORD INFORMATION ⇨ PLANTING SIZES TAB

The Planting Sizes tab in the View Record dialog box (below) provides you with the ability to list the available installed sizes. This information will assist you in placing plant material in the **Landscape Design** module as it will dynamically fill in a number of options for you.

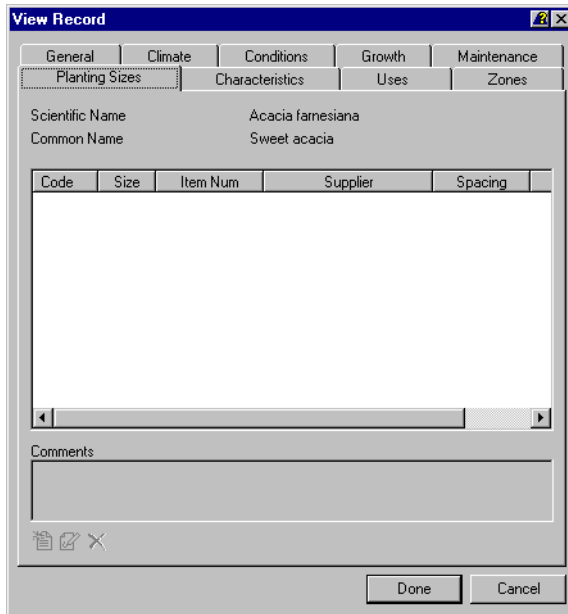





Figure 2-9 View Record Dialog Box–Planting Sizes Tab

View Record Dialog Box–Planting Sizes Tab Definitions

Option	Icon	Function
Code		This column displays an abbreviated name for each plant that may be used for labeling purposes at a later time.
Size		The Size column displays the size of an installed plant. For example, 1 gallon, 2 gallon.
Item Num		The Item Num column displays an internal part number that you might desire.
Supplier		The Supplier column displays the name of a supplier of this plant material.
Spacing		The Spacing column displays the default spacing when utilizing the hedge row or grove command.
Comments		The Comments column displays any comments you may want to be supplied in the plant table, such as full and bushy.
New		Select the New icon to create a new available plant size.
Modify		Select the Modify icon to modify an existing plant size.
Delete		Select the Delete icon to delete an existing plant size.

New Planting Size

PLANT DATABASE ⇨ MODIFY ⇨ MODIFY INFORMATION ⇨ PLANTING SIZES TAB ⇨ NEW

The New Planting Size feature was developed to increase design efficiency by automatically filling in a number of settings in the Landscape Design product when creating a planting plan. You can enter information into a number of predefined fields in order to customize the plant database. You must be in modify mode in order to have access to the New Planting Size dialog box (Figure 2-11 on page 18). To access a record in modify mode either right click on the entry or click on the Modify icon in the Plant Data

window (Figure 1-2 on page 2). The Modify Record dialog box (below) is displayed. You select the Planting Sizes tab.

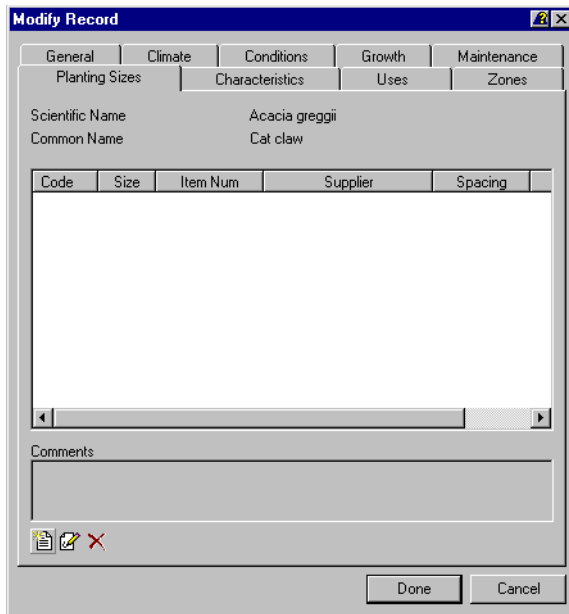





Figure 2-10 Modify Record Dialog Box

-  Each tab in the Modify Record dialog box (above) contains the same information as the corresponding tab in the View Record dialog box (Figure 2-2 through Figure 2-14 beginning on page 8). If you need more information about a particular tab consult Chapter 2 – View, which begins on page 7.

When you click on the New icon in the Modify Record dialog box–Planting Sizes tab (Figure 2-10 on page 17), the New Planting Size dialog box (below) is displayed.

Figure 2-11 New Planting Size Dialog Box

New Planting Size Dialog Box Definitions

<i>Option</i>	<i>Icon</i>	<i>Function</i>
Code Name		The Code Name edit field is an optional field which contains a unique code for the plant/size.
Planting Size		The Planting Size edit field is the installed size.
Inventory Code		The Inventory Code edit field is an optional field which contains the internal part number (SKU).
Supplier		The Supplier edit field is an optional field which contains the supplier of plant material.
Spacing		The Spacing edit field is the default spacing on center used in the Hedge Row and Grove command.
Available		This indicates if the plant is currently available for the designer to use.
Default Size		If selected this feature will automatically fill in the plant size. This feature appears when the Available toggle is toggled on.
QTO Id		This optional feature allows you to select the QTO number that will be assigned with this plant size.
QTO Link		The QTO Link icon provides a link to the QTO database to select an appropriate ID number.
Delete		Clicking on the Delete icon removes the previously assigned QTO ID number.
Comments		This list is optional. You have the option to place comments here for the plant table.

Characteristics

PLANT DATABASE ⇨ VIEW ⇨ RECORD INFORMATION ⇨ CHARACTERISTICS TAB

The Characteristics tab in the View Record dialog box (below) provides information regarding specific attributes which lend themselves to determine the aesthetics of a particular plant. A plant's foliage color, crown density, fragrance and bark surface are important when determining whether that plant will be desirable to a particular landscape setting. Bloom period and fruit period are also beneficial when designing so you know which plants bloom at different times throughout the year providing for optimal performance of your landscape.

Chapter 2: View

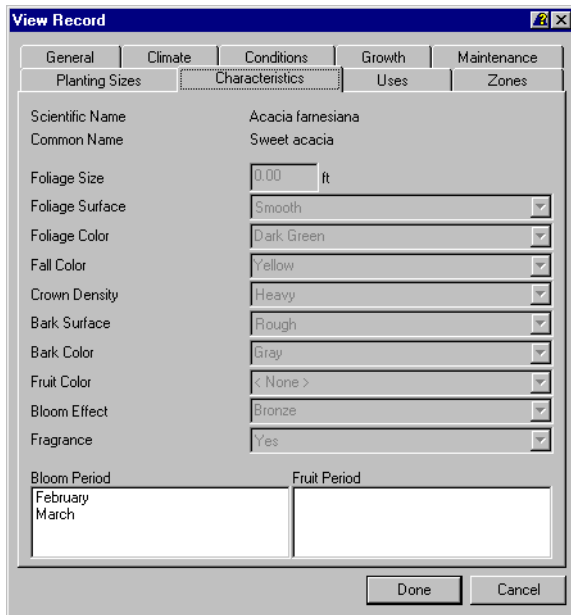


Figure 2-12 View Record Dialog Box–Characteristics Tab

View Record Dialog Box–Characteristics Tab Definitions

Option	Function
Foliage Size	This indicates the size of the plant's foliage.
Foliage Surface	The Foliage Surface edit field describes the foliage surface such as shiny, dull, etc.
Foliage Color	The Foliage Color edit field indicates the color the this plant's foliage.
Fall Color	The Fall Color edit field indicates the color of this plant in the Fall.
Crown Density	The Crown Density edit field describes the plant branch density at the crown.
Bark Surface	The Bark Surface edit field indicates the appearance the this plant's bark.

View Record Dialog Box—Characteristics Tab Definitions

Option	Function
Bark Color	The Bark Color edit field indicates the color of this plant's bark.
Fruit Color	The Fruit Color edit field indicates the color of this plant's fruit.
Bloom Effect	The Bloom Effect edit field describes bloom characteristics for the plant.
Fragrance	The Fragrance edit field indicates if the plant has a fragrance.
Bloom Period	The Bloom Period list displays the time of year that the plant produces flowers, if any.
Fruit Period	The Fruit Period list displays the time of year the plant produces fruit, if any.

Uses

PLANT DATABASE ⇨ VIEW ⇨ RECORD INFORMATION ⇨ USES

The Uses tab in the View Record dialog box (below) displays a range of common uses for the selected plant including Architectural, Engineering, Aesthetic and Climatological. After you have determined your landscaping needs, this information is beneficial in choosing a plant.

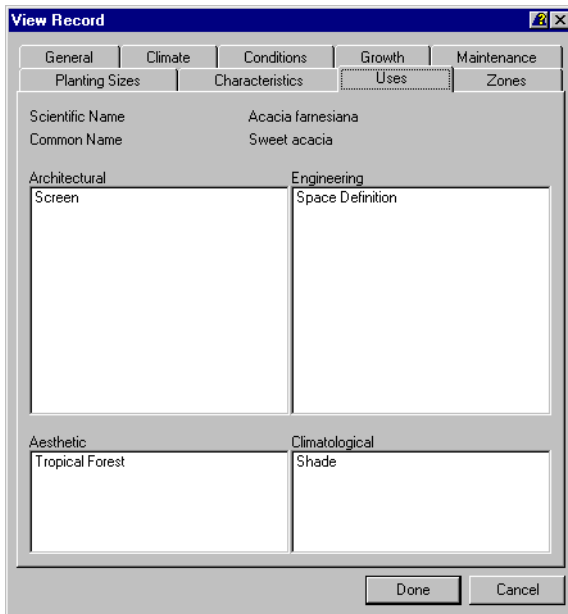


Figure 2-13 View Record Dialog Box—Uses Tab

View Record Dialog Box–Uses Tab Definitions

<i>Option</i>	<i>Function</i>
Architectural	The Architectural list displays the various ways to utilize architectural elements of the selected plant.
Engineering	The Engineering list indicates ways the plant may be used for engineering or construction purposes.
Aesthetic	The Aesthetic list displays common uses for the selected plant that would be visually appealing.
Climatological	The Climatological list displays uses of the plant to control climate condition.

Zones

PLANT DATABASE ⇨ VIEW ⇨ RECORD INFORMATION ⇨ ZONES TAB

The Zones tab in the View Record dialog box (below) shows which zones have favorable growing conditions for a particular plant.

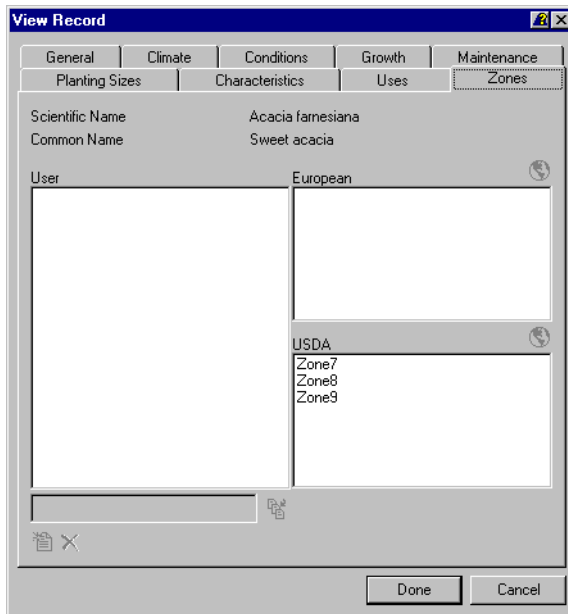


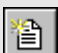



Figure 2-14 View Record Dialog Box–Zones Tab

View Record Dialog Box–Zones Tab

<i>Option</i>	<i>Icon</i>	<i>Function</i>
User		This area allows you to specify special local zones.

View Record Dialog Box–Zones Tab

Option	Icon	Function
European		International Zones where this plant may be found.
USDA		USA Zones where this plant may be found.
Globe		The Globe icon displays a graphical map and is active when in Modify mode rather than View mode.
Append New User Zone to List		This icon appends a newly created zone to the user list and is active when in Modify mode.
New		Select the New icon to create a new entry and is active when in Modify mode.
Delete		Select the Delete icon to delete an exiting entry and is active when in Modify mode.

Display Units

PLANT DATABASE ⇨ VIEW ⇨ DISPLAY UNITS

KEY-IN COMMAND: pduni ts

Plant Database chooses a default set of units for various quantities. You can change these values at any time by accessing the Display Units dialog box (below) from the View menu (Figure 2-1 on page 7). All of the current unit settings will be displayed in groups of radio buttons. Simply click on the desired unit to which you want to change. When you have made your choice, click on OK to accept.

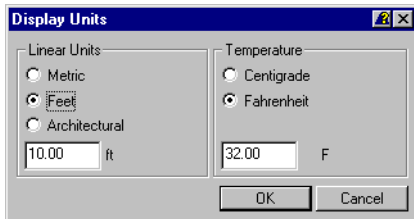


Figure 2-15 Display Units Dialog Box

Display Units Dialog Box Definitions

Option	Function
Metric	Turn on the Metric radio button to display pertinent information in metric units in the edit field below.

Display Units Dialog Box Definitions

<i>Option</i>	<i>Function</i>
Feet	Turn on the Feet radio button to display pertinent information in decimal feet units in the edit field below.
Architectural	Turn on the Architectural radio button to display pertinent information in architectural feet units in the edit field below.
Centigrade	Turn on the Centigrade radio button to display pertinent information in Centigrade in the edit field below.
Fahrenheit	Turn on the Fahrenheit radio button to display pertinent information in Fahrenheit in the edit field below.

RECORDS

The Records menu (below) includes commands to control modification of the amount of information stored within the plant database.

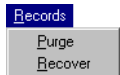


Figure 3-1 Records Menu

In this chapter:

<i>Purge</i>	26
<i>Recover</i>	26

Purge

PLANT DATABASE ⇨ RECORDS ⇨ PURGE

KEY-IN COMMAND: pdpurge

The Purge command allows you to permanently remove previously deleted plants from the database. After you delete records, they are still included in the database until you run the Purge command. Once you select the Purge command, a warning box is displayed advising you that the selected records will be completely and permanently removed from the database. If you are unsure of what you are going to be removing, you can cancel the command and use the Recover command (see *Recover*, below) to restore the database to include all records. You can only use the Purge command after the Delete command has been used.

- ✓ ***Once you purge records from the database, you cannot retrieve them. Be certain that you have restored any plants that you may need in the future to the database.***

Recover

PLANT DATABASE ⇨ RECORDS ⇨ RECOVER

KEY-IN COMMAND: pdrecover

Use the Recover command to retrieve the records that you previously deleted from the list in the database. For example, if you had deleted plants that do not fit within a selected climate from the database but now have a new project in a different region where these plants would fit, you would use the Recover command to restore all plants the database.

BROWSE

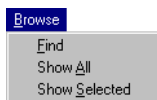


Figure 4-1 Browse Menu

In this chapter:

<i>Find</i>	28
<i>Show All</i>	29
<i>Show Selected</i>	29

CHAPTER


4

Find

PLANT DATABASE ⇨ BROWSE ⇨ FND

KEY-IN COMMAND: pdsearch

The Find command allows you to search the database for specific plants that fit certain criteria required for a design project. For example, you may need to find a plant that would grow well in a particular soil type and could also act as a windbreak. Using the Find command, you can search for plants that grow in that specific type of soil, that are commonly used for a windbreak and that grow in the zone where the site is located. Only plants that meet all the criteria are highlighted in the plant database. This process helps to narrow down the list of plants that are available to use for this project.

 *When selecting criteria you may not see any plant names that meet your needs. If you have several standards selected, you may need to remove some of the criteria to find the plants that work for the situation. However, even if you have only one criterion selected, there may not be any plants in the database that match the characteristic you selected.*

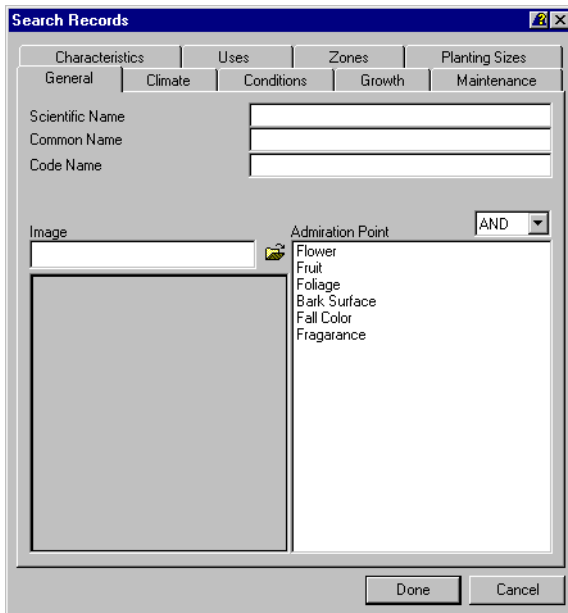



Figure 4-2 Search Records Dialog Box

-  Each tab in the Search Records dialog box (Figure 4-2 on page 28) contains the same information as the corresponding tab in the View Record dialog box (Figure 2-2 through Figure 2-14 beginning on page 8). If you need more information about a particular tab consult Chapter 2 – View, which begins on page 7.

Show All

PLANT DATABASE ⇨ BROWSE ⇨ SHOW ALL

KEY-IN COMMAND: pdshowal I

The Show all command restores the plant database to include all plants. Use this command after the Show Selected command has reduced the plants displayed in the database. This would be necessary if you want to do a new search based on specific criteria.

Show Selected

PLANT DATABASE ⇨ BROWSE ⇨ SHOW SELECTED

KEY-IN COMMAND: pdshowsel ected

The Show Selected command abbreviates the displayed list of plants to include only those plants that include the specific characteristics in which you are interested. To make browsing easier, this command temporarily hides the portion of the plant list not selected. You can also use this command to create smaller name files or palettes of frequently used plants. For example, if you do most of your design work in the Midwest, you could create a palette that contains only plants that grow in the Midwest. You determine your criteria through the Find command on page 28.

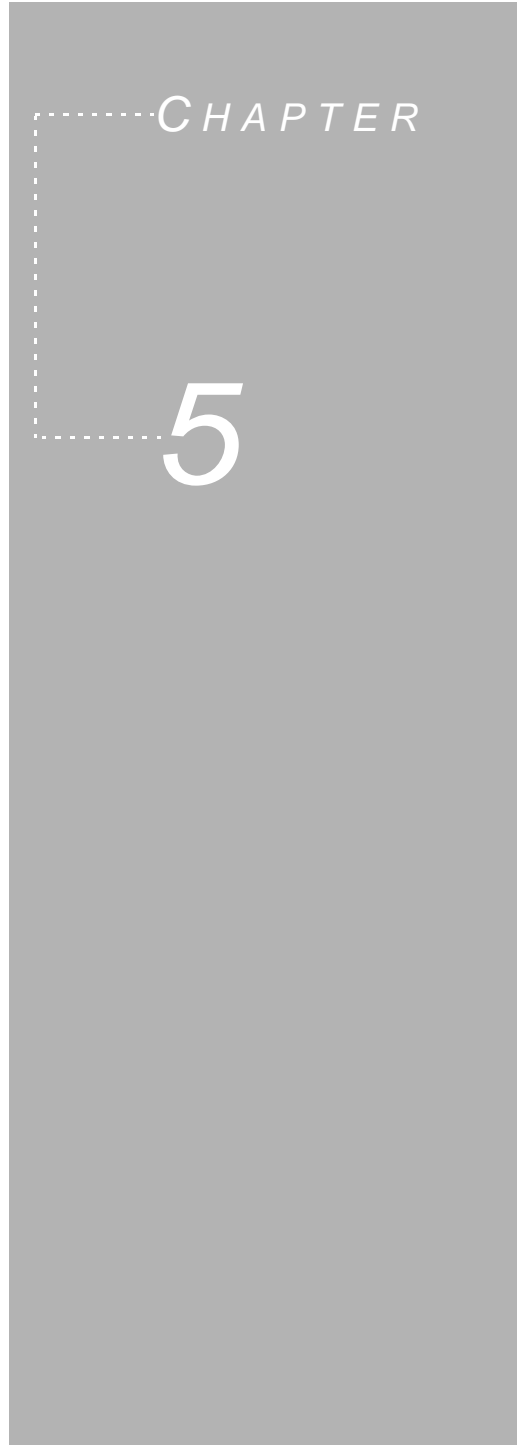
CAD LINK



Figure 5-1 CAD Link Menu

In this chapter:

<i>Show Plants</i>	32
<i>Find Plant Records</i>	32



Show Plants

PLANT DATABASE ⇨ CAD LINK ⇨ SHOW PLANTS

KEY-IN COMMAND: pdshowplants

The Show Plants command graphically shows the location of selected plants within your design in the CAD engine. You must first highlight particular plants in the View Record dialog box (Figure 2-2 on page 8) and select the Show Plants command from the CAD Link menu (Figure 5-1 on page 31).

Find Plant Records

PLANT DATABASE ⇨ CAD LINK ⇨ FIND PLANT RECORDS

KEY-IN COMMAND: pdfindplants

The Find Plant Records command allows you access to plant records directly while in the CAD engine. When you select the Find Plant Records command the Find Plant Records dialog box (below) is displayed. Select one of the three options as defined below and click on the Select button. The selected plants are highlighted in the View Record dialog box (Figure 2-2 on page 8). To show specific information about particular plants, you have the option to use the Show Selected command. For more information regarding this command, see *Show Selected* on page 29.



Figure 5-2 Find Plant Records Dialog Box

Find Plant Records Dialog Box Definitions

Option	Function
Selection Set	Turn on the Selection Set radio button to select plants graphically in the CAD engine.
All Plants	Turn on the All Plants radio button to select all plants in the design.
Plants on Layers	Turn on the Plants on Layers radio button to select plants on selected layers.

INDEX

A

Admiration Point	10
Aesthetic	21
All Plants	32
Append New User Zone to List	22
Architectural	21, 23
Available	18

B

Bark Color	20
Bark Surface	19
Bloom Effect	20
Bloom Period	20

C

Centigrade	23
Characteristics	9
Climate	8, 11
Climatological	21
Code	16
Code Name	2, 10, 18
Cold Temperature	11
Comments	16, 18
Common Name	2, 10
Conditions	8, 12
Crown Density	19

D

Data	1
Import from Name	5
Default Size	18
Delete	16, 18, 22
Delete Record	2
Details	4
Detriments	15

E

Engineering	21
European	22

Exposure	12
----------	----

F

Fahrenheit	23
Fall Color	19
Feet	23
Fertilize Time	15
Find Image	10
Foliage Color	19
Foliage Size	19
Foliage Surface	19
Fragrance	20
Fruit Color	20
Fruit Period	20

G

General	8
Globe	22
Growth	9
Growth Form	14
Growth Pattern	14
Growth Rate	13

H

Height	13
--------	----

I

Image	10
Import from Name	5
Import Name File Dialog Box	5
Import Global Setup	4
Import Name File Dialog Box	5
International	11
Inventory Code	18
Item Num	16

M

Maintenance	9
Metric	22

Miscellaneous	12
Modify	16
Modify Record	2
MS-Word	4

N

New	16, 22
New Record	2

P

Place Topic Above	4
Place Topic Below	4
Plant Type	13
Planting	18
Planting Size	18
Planting Sizes	9
Planting Time	15
Plants on Layers	32
Pruning Time	15

Q

QTO Id	18
QTO Link	18

R

Refresh Data	3
--------------------	---

S

Save as Global Setup	4
Scientific Name	2, 10
Select	4
Select All Data	3
Select Print File	4
Selection Set	32
Service Life	13
Size	16
Planting Size	18
Soil Conditions	12
Spacing	16, 18
Supplier	16, 18

T

Tolerances	12
Transplanting	14
Transplanting Time	15

U

United States	11
USDA	22
User	21
Uses	9

V

View Record	3
-------------------	---

W

Warm Temperature	11
Water Requirements	14
Width	13
Wordview	4

Z

Zones	9
-------------	---