

Pocket SMI User Guide by Eagle Point

SMI software version: 7.1

Information in this manual is subject to change without notice and does not represent a commitment on the part of the vendor. The software described in this manual is furnished under a license agreement and may be used or copied only in accordance with the terms of the agreement.

Eagle Point has carefully prepared this program package, including research, development, and testing to ascertain its effectiveness and accuracy. However, no warranty of any kind is made with respect to this program package or its related material, except as may be expressly stated in the licensing agreement or other contractual document. In no event is Eagle Point liable for incidental or consequential damages in connection with, or arising out of, the furnishing, performance, or use of this program package.

The installation program used to install ***Pocket SMI*** software, Wise Installation System, is licensed software provided by Wise Solutions, Inc.

Allegro and Allegro CE™ are registered trademarks of Juniper Systems, Inc.

Dell Axim™ is a trademark of the Dell Computer Corporation.

HP and Compaq and the names of HP and Compaq products referenced herein are either trademarks and/or service marks or registered trademarks and/or service marks of HP and/or its subsidiaries.

Windows® is a registered trademark of Microsoft Corporation.

All other registered or unregistered trademarks are the property of their respective holders.

Copyright © Q1, 2003, by Eagle Point. All rights reserved.

POCKET SMI USER GUIDE

TABLE OF CONTENTS

1 Pocket SMI Interface	1
Overview	2
Title Bar	2
Command Bar	3
Command Tabs	4
Status Bar	4
2 Pocket SMI Commands	5
Classic SMI Settings	7
Command Favorites	7
Customize Command Keys/ Customize Command Bar/ Customize Command Favorites	8
Add Command	9
Download Geoid File	10
Graphical Stakeout	11
Instrument Status	13
Instrument Status (Total Station)	14
Instrument Status (GPS Receiver)	15
Next Button	16
Select Command Bar Menu	17
Select Command Favorites Menu	18
Select Command Keys Menu	19
Switch Classic & Pocket	20
Soft Key Commands	20
Use Geoid99	21

3 Exercises	23
<i>Configure the Command Keys</i>	24
<i>QuickSteps</i>	24
<i>Select a Command Favorites Menu</i>	25
<i>QuickSteps</i>	25
<i>Use a Command Favorites Menu</i>	27
<i>QuickSteps</i>	27
Index	29

P O C K E T S M I I N T E R F A C E

In this chapter:

<i>Overview</i>	2
<i>Title Bar</i>	2
<i>Command Bar</i>	3
<i>Command Tabs</i>	4
<i>Status Bar</i>	4

CHAPTER

1

Overview

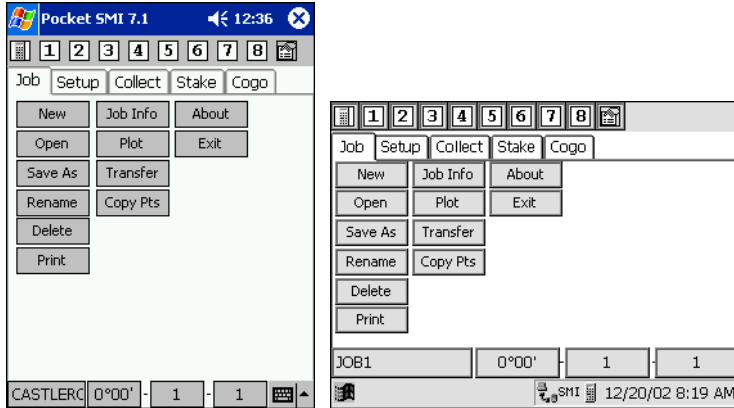


Figure 1-1 *Pocket SMI* Interface in *Pocket PC* (left) and *Titan* (right)

If you are not familiar with SMI software on the HP 48, you may prefer the ***Pocket SMI*** user interface, which offers the easy-to-learn organization of tabs and large buttons. There is more room on the buttons to show the function name instead of the five-letter abbreviation required for the ***Classic SMI*** keyboard overlay and soft keys. Many of the commands started from the ***Pocket SMI*** interface actually run in the ***Classic SMI*** window. Getting to any function is as easy as two taps – one to select the tab for the general category of function and another tap to select the button to start the function. You may also customize commands using the ***Pocket SMI*** Command Bar.

The ***Pocket SMI*** touch screen is divided into four different areas:

- the Title Bar
- the Command Bar
- the Command Tabs
- the Status Bar

Title Bar

At the top of the ***Pocket SMI*** display the Start icon, ***Classic SMI*** version, and the time are shown. This area is called the Title Bar. Tapping on the Start icon or text brings up the Start Menu.


 Landscape oriented devices such as the Titan have a system bar at the bottom of the screen instead of a title bar.



Figure 1-2 Title Bar

Command Bar

At the top of the **Pocket SMI** interface is a row of ten buttons called the Command Bar.

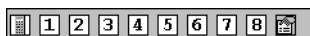


Figure 1-3 Command Bar



The first button is a calculator icon (above) that, when tapped, switches to the **Classic SMI** interface.



The buttons labeled 1 through 8 can be assigned to any command. To change the command assignments on the 1-8 buttons, tap on the Select a Command Bar Menu icon (above). It opens the Select Command Bar Menu window. Tap on the Command Bar menu you want to use and it will be immediately assigned to the Command Bar.

The Customize button in the Select Command Bar Menu opens the Customize Command Bar window. See *Customize Command Keys/Customize Command Bar/Customize Command Favorites* on page 8 for more information.

Command Tabs

The command tabs enable access to the major **Pocket SMI** commands. Tap on the tab to see the buttons related to that tab.

Please refer the **Version 7 User Guide** and *Pocket SMI Commands*, which begins on page 5, for more information about particular commands.

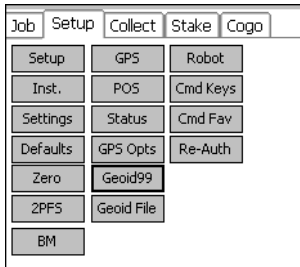


Figure 1-4 Command Tabs

Status Bar

The Status Bar shows the current job, the backsight point, the occupied point, the foresight point or last point stored, and the soft input panel shortcut. Any of these settings can be changed by tapping on the Status Bar.



Figure 1-5 Status Bar

POCKET SMI COMMANDS

In this chapter:

<i>Classic SMI Settings</i>	7
<i>Command Favorites</i>	7
<i>Customize Command Keys/Customize Command Bar/ Customize Command Favorites</i>	8
<i>Download Geoid File</i>	10
<i>Graphical Stakeout</i>	11
<i>Instrument Status</i>	13
<i>Next Button</i>	16
<i>Select Command Bar Menu</i>	17
<i>Select Command Favorites Menu</i>	18
<i>Select Command Keys Menu</i>	19
<i>Soft Key Commands</i>	20
<i>Switch Classic & Pocket</i>	20
<i>Use Geoid99</i>	21

CHAPTER

2

Most of the **Pocket SMI** commands are described in the **SMI Version 7 User Guide**. Commands unique to **Pocket SMI** are described in this chapter in alphabetical order. All of these commands are in the list of commands available when adding a command to a command menu (see *Customize Command Keys/Customize Command Bar/Customize Command Favorites* on page 8). Some of these commands are also in one of the tabbed windows of the **Pocket SMI** interface. Each of the command descriptions starts with the following entries: Product, Location, Command Group, and Abbreviation. When applicable, the command icon is shown.

Command Description Format

Entry	Definition
Product	<p>Products that include this command. Following are the programs that SMI offers:</p> <ul style="list-style-type: none"> ➤ SCE - Standard COGO ➤ ACE - Advanced COGO ➤ DCE - Data Collection ➤ CVCE - Construction Five ➤ DCER - Data Collection/Robotic ➤ CVCR - Construction Five GPS/Robotic ➤ DOT - Construction Five Department of Transportation
Location	The buttons to tap to get to the command. They are shown in the font that is used on the device (usually Tahoma or Tahoma Bold).
Command Group	The group in the Add Command window that the command is listed under. One of the ways to see the Add Command window is to go to the Pocket SMI interface and tap the Setup tab, tap on the Cmd Fav button, tap on the Select button, tap on the Customize button, and in the Customize Command Favorites dialog box, tap on the Add button.
Abbreviation	The abbreviation for the command used on the Command Key menu on the Titan.

Classic SMI Settings

PRODUCT: SCE+

Classic SMI Location: File → Settings

Pocket SMI Location: Setup tab → Settings button

COMMAND GROUP: PROGRAM SETTINGS

ABBREVIATION: CSMIS


These actions open the **Classic SMI** Settings window. For more information, see the Classic SMI Interface chapter in the **SMI** User Guide for your device.

Command Favorites

PRODUCT: SCE+

Classic SMI Location: Asterisk icon

Pocket SMI Location: Setup tab → Cmd Fav button

ICON: 

COMMAND GROUP: PROGRAM SETTINGS

ABBREVIATION: FAV

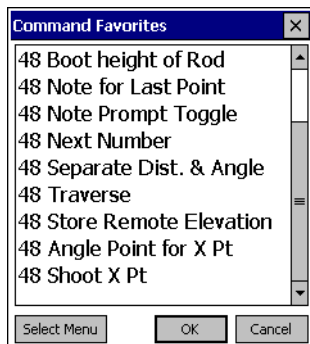


Figure 2-1 Command Favorites Menu

The Command Favorites menu presents the current list of command favorites. Tapping on a command immediately runs the command. Another way of running a command without

tapping on the screen is to use the up and down cursor keys to select the desired command and then press the center of the Navigation button to run the command.

Tapping the **Select Menu** button allows you to change the current menu of command favorites to a different menu of commands. See *Select Command Favorites Menu* on page 18 for more information.

Customize Command Keys/Customize Command Bar/Customize Command Favorites

PRODUCT: SCE+

Classic SMI Location: File → Customize Command Keys

Pocket SMI Location: Setup tab → Cmd Keys button → Customize button OR
 Select Command Bar Menu icon → Customize button OR
 Setup tab → Cmd Fav button → Select Menu button →
 Customize button

COMMAND GROUP: PROGRAM SETTINGS

ABBREVIATION: CMDKY, BARS, FAVS

The Customize Command window enables the creation and editing of menus of commands that can be assigned to the Command Keys, Command Bar, or Command Favorites. Changes are saved as they are made.

If you are modifying one of the menus that was installed with the program, tap the New button while it is the current menu and give it a slightly different name. This will prevent the menu from being replaced by the default version the next time the program is installed.

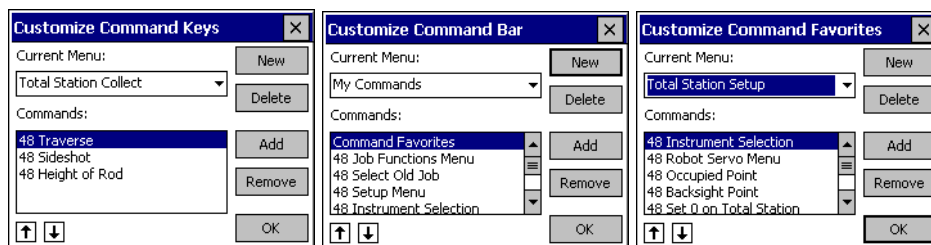


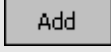
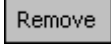
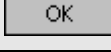




Figure 2-2 Customize Command Menus

Customize Command Menu Definitions

Option	Icon	Function
Current Menu		This information indicates the menu that is currently being edited. Tap on the triangle or press the up and down cursor keys while the current menu is selected to change to a different menu.

Customize Command Menu Definitions

<i>Option</i>	<i>Icon</i>	<i>Function</i>
New		Tap on this button to create a new command menu.
Delete		Tap on this button to delete the current menu.
Add		Tap on this button to add a new command to the current menu. For more information, see <i>Add Command</i> (below).
Remove		Tap on this button to remove the current command from the list of commands.
OK		Tap on this button to accept the changes and close the Customize Command window.
Up Arrow		Tap on the Up Arrow to move the currently selected command up in the list of commands.
Down Arrow		Tap on the Down Arrow to move the currently selected command down in the list of commands.

Add Command**Figure 2-3 Add Command Window**

Command Group: The commands are divided into groups to make it easier to find the command you are looking for. The current group is shown in the box. Tap on the triangle or press the up and down cursor keys while the command group is selected to change to a different command group.

Commands that start with 48 are the HP 48 commands. The other commands are unique to **Pocket SMI**.

Download Geoid File

PRODUCT: GPS/ROBOTIC

Classic SMI Location: Geoid → Download Geoid File

Pocket SMI Location: Setup tab → Geoid File button

COMMAND GROUP: GPS

ABBREVIATION: DLGEO

Select this command to start receiving a Geoid99 file from **SMI Transfer 7**. Select the To DC menu item in **SMI Transfer 7**, click on the Send Geoid button, and select the Geoid file to send.

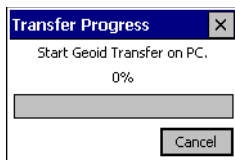


Figure 2-4 Geoid Transfer Screen

Graphical Stakeout

PRODUCT: GPS/ROBOTIC

Classic SMI Location: Stake icon

Pocket SMI Location: Stake tab → Graphical button

ICON: 

COMMAND GROUP: STAKE

ABBREVIATION: GPSTK

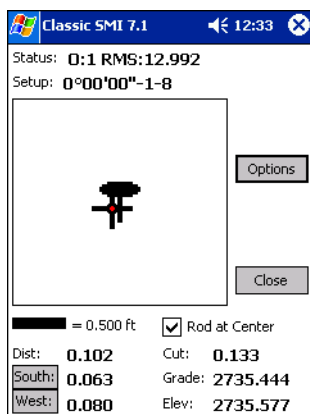


Figure 2-5 Graphical Stakeout Screen


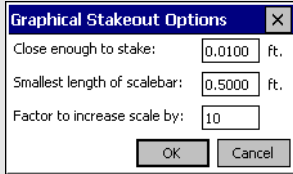
This screen is very useful for staking using GPS receivers or Robotic instruments. It can also be used with conventional instruments. It assumes that the foresight point or station has already been entered using **FSPT** in the Stake menu or **FS** in the CONST menu. Graphical stakeout can also be used after tapping **CATCH** or **REFP** in the **SSTK** menu to stake the catch point or reference point.

The screen automatically updates every time a measurement is taken. For GPS receivers that support it, the screen will be updated as fast as five times per second.




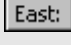
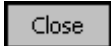
Graphical Stakeout Screen Definitions

Option	Icon	Function
Status		This field displays information about communications with the instrument. For GPS instruments, the Quality and Horizontal Error estimate values are displayed in the status area.
Setup		This field displays the backsight, occupied point, and foresight point.

Graphical Stakeout Screen Definitions

Option	Icon	Function
Display		The display screen shows the point being staked and the location of the rod. When staking with GPS, the top of the screen is north. With non-GPS equipment, the top of the screen is toward the occupied point. The point being staked is a plus icon. A prism is shown with a target icon and a GPS receiver is shown as an antenna. The icons get larger when at the tightest zoom. How tightly the display will zoom is controlled by the "Smallest length of scalebar" setting in the Options window that is displayed when the Options button is tapped. When the centers of the icons line up, a smiley face is displayed to indicate that the shot is close enough to stake. How close that is can also be changed in the Options window.
Options		<p>Tapping the Options button displays the Graphical Stakeout Options dialog box.</p>  <ul style="list-style-type: none"> ➔ Close enough to stake: The maximum distance between the shot and point being staked required before the smiley face will be displayed. ➔ Smallest length of scalebar: This distance limits how tightly the display will zoom into the points. The scale bar is one-fourth the width of the graphical display area. The icons get larger when at the tightest zoom. ➔ Factor to increase scale by: The scale to use when zooming to fit the foresight point and the shot icon is determined by the following formula: $S * F * I$ where S is the smallest scale and F is the factor to increase the scale and I is an integer larger than 1.
Scale Bar		The scale bar is one-fourth the width of the graphical display area.
Rod at Center Toggle		This toggle switches between showing the rod in the center of the display area and showing the foresight point in the center.
Text Output Area		<p>Located at the bottom of the screen, this text is updated with each shot.</p> <ul style="list-style-type: none"> ➔ Dist: This is the distance between the foresight point and the shot. ➔ Cut/Fill: This is the distance between the grade elevation and the shot elevation. ➔ Grade: This is the elevation of the point being staked. ➔ Elev: This is the elevation of the last shot taken.

Graphical Stakeout Screen Definitions

<i>Option</i>	<i>Icon</i>	<i>Function</i>
Come/Go Right/Left	 	These buttons toggle between displaying Go/Come and Left/Right data and North/South and East/West data. When the orientation is switched, the graphical display changes as well, so the top of the screen is toward the instrument or toward north, respectively.
North/South East/West	 	
Close		Tapping on this button closes the graphical stakeout window.

Instrument Status

PRODUCT: GPS/ROBOTIC

Pocket SMI Location: Setup tab → Status button

COMMAND GROUP: SETUP

ABBREVIATION: STAT

The Instrument Status command either brings up the GPS Status window or the Total Station Status window, depending on whether a GPS receiver or a Total Station instrument is in use.

Instrument Status (Total Station)

The Instrument Status window communicates with the current total station and displays the status of the instrument about once every second. This is most useful with robotic instruments.

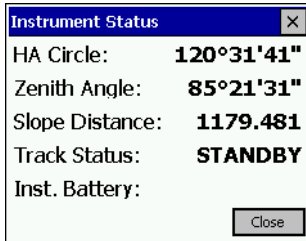


Figure 2-6 Instrument Status Dialog Box

Instrument Status Dialog Box Definitions

<i>Option</i>	<i>Function</i>
HA Circle	This is the current horizontal circle reading on the instrument.
Zenith Angle	This is the current zenith angle reading on the instrument.
Slope Distance	This is the current slope distance reading on the instrument.
Track Status	This indicates whether the instrument is tracking the prism.
Inst. Battery	This shows the current battery charge level.

Instrument Status (GPS Receiver)

The GPS Status Window communicates with the current GPS receiver and displays the status of the receiver.

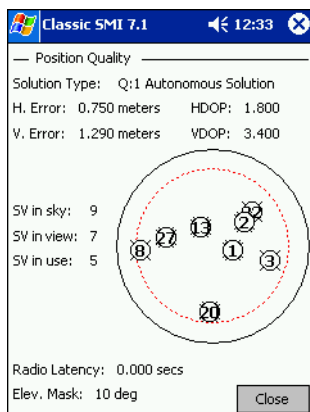



Figure 2-7 GPS Status Window

GPS Status Window Definitions

Option	Icon	Function
Solution Type		Possible values arranged from worst to best are: <ul style="list-style-type: none"> ➔ No Solution: Not enough satellites to calculate position. ➔ Autonomous Solution: Position calculated without corrections. ➔ Augmented Solution: Positions calculated with corrections. This could be differential or WAAS corrections. ➔ RTK Float Solution: Positions calculated with corrections from a base station, but the satellite arrangement or radio signal is too poor for an exact solution. ➔ RTK Fixed Solution: Positions calculated with corrections from a base station.
H. Error		This is the horizontal error estimate reported by the receiver.
V. Error		This is the vertical error estimate reported by the receiver.
HDOP		This is the horizontal dilution of precision. This number should be below 2 for good results. Poor satellite arrangement will cause this number to be high.
VDOP		This is the vertical dilution of precision. This number should be below 3 for good results. Poor satellite arrangement will cause this number to be high.
Sky View		This shows the arrangement of satellites in the sky. North is toward the top of the screen. Satellites with four small lines outside their circle are just being tracked. Satellites with eight small lines outside their circle are in dual frequency mode and are above the elevation mask.


GPS Status Window Definitions

Option	Icon	Function
SV in sky		This is the number of satellites in the sky according to the almanac.
SV in view		This is the number of satellites being tracked.
SV in use		This is the number of satellites being used in the position calculations.
Radio Latency		This is the number of seconds that have passed since the last correction was received. If the receiver can receive corrections from WAAS satellites, the radio latency will show the latency as 3-7 seconds. If it is receiving radio signals from a base station, the latency should be 1 second or less.
Elev. Mask		This is the number of degrees above the horizon a satellite must be before being used in the solution calculation. Ignoring satellites below the elevation mask helps reduce error introduced by atmospheric interference.
Close		This button closes the GPS Status window.

Next Button



PRODUCT: SCE+

Classic SMI Location: Next button

ICON: 

COMMAND GROUP: PROGRAM SETTINGS

ABBREVIATION: NEXT

Tapping the  button simulates tapping the  button in **Classic SMI**, which switches the **Classic SMI** soft key menu to the next page of soft key options.

Select Command Bar Menu

PRODUCT: SCE+

Pocket SMI Location: Command Bar Properties icon

ICON: 

COMMAND GROUP: PROGRAM SETTINGS

ABBREVIATION: BAR

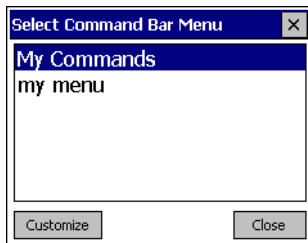


Figure 2-8 Select a Command Bar Menu

The Select Command Bar menu presents a list of command bar menus from which to choose. As soon as a menu is selected, the commands defined in the selected menu are displayed and assigned to the command bar.

Tapping the Customize button allows you to create and edit command bar menus. See *Customize Command Keys/Customize Command Bar/Customize Command Favorites* on page 8 for more information.

Select Command Favorites Menu

PRODUCT: SCE+

Pocket SMI Location: Setup tab → Cmd Fav button → Select Menu button

COMMAND GROUP: PROGRAM SETTINGS

ABBREVIATION: FAV



Figure 2-9 Select Command Favorites Menu

The Select Command Favorites Menu window presents a list of Command Favorites menus. Tapping on a menu name immediately selects the menu and shows the Command Favorites window with that menu active. A menu can also be selected by using the up and down cursor keys to select the desired menu and then pressing the center of the Navigation button to activate the menu.

Tapping the Customize button allows you to change the current list of command favorites. See *Customize Command Keys/Customize Command Bar/Customize Command Favorites* on page 8 for more information.

Select Command Keys Menu

PRODUCT: SCE+

Classic SMI Location: Button icon

Pocket SMI Location: Setup tab → Cmd Keys button

ICON: 

COMMAND GROUP: PROGRAM SETTINGS

ABBREVIATION: FMENU

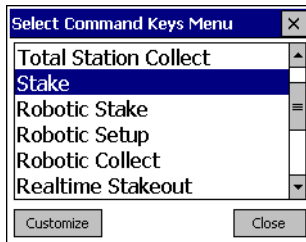


Figure 2-10 Select Command Keys Menu

Tapping on the button icon in **Classic SMI** opens the Select Command Keys Menu window, which enables you to assign a predefined list of commands to the four small hard keys below the screen.

Tapping the Customize button allows you to change the current list of command keys. See *Customize Command Keys/Customize Command Bar/Customize Command Favorites* on page 8 for more information.

On the **Titan**, there are five hard keys (F1, F2, F3, F4 and Tab) below the screen. An abbreviation of the command names appears on the screen above the hard keys.

Soft Key Commands

PRODUCT: SCE+

Classic SMI Location: File → Customize Command Keys → Add

Pocket SMI Location: Setup tab → Cmd Keys button → Add button

COMMAND GROUP: PROGRAM SETTINGS

ABBREVIATION: SOFT1, SOFT2, SOFT3, SOFT4, SOFT5, SOFT6

The Program Settings group in the Add Command window contains six commands for **Classic SMI** soft keys one through six. They are named “48 Softkey 1” through “48 Softkey 6”. Each command simulates tapping the corresponding soft key in the soft key menu. The soft key commands are most useful when assigned to command keys.

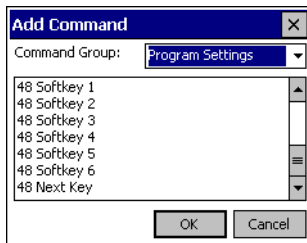


Figure 2-11 Add Command – Program Settings Menu

Switch Classic & Pocket

PRODUCT: SCE+

Classic SMI Location: Calculator icon

Pocket SMI Location: Calculator icon

ICON: 

COMMAND GROUP: PROGRAM SETTINGS

ABBREVIATION: SWTCH

The Switch Classic & Pocket command switches the current user interface between **Classic SMI** and **Pocket SMI**.

Use Geoid99

PRODUCT: GPS/ROBOTIC

Classic SMI Location: Geoid → Use Geoid99

Pocket SMI Location: Setup tab → Geoid99 button

COMMAND GROUP: GPS

ABBREVIATION: GEOID

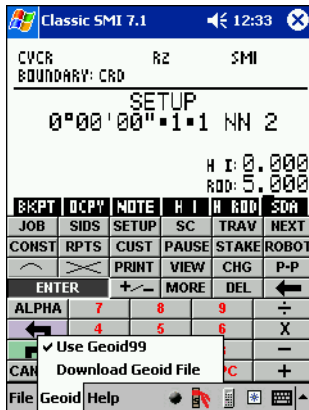


Figure 2-12 Geoid Menu

Select this command to correct GPS heights reported by GPS receivers using Geoid99 files. The option is on when a check mark appears next to the menu item in the **Classic SMI** menu.

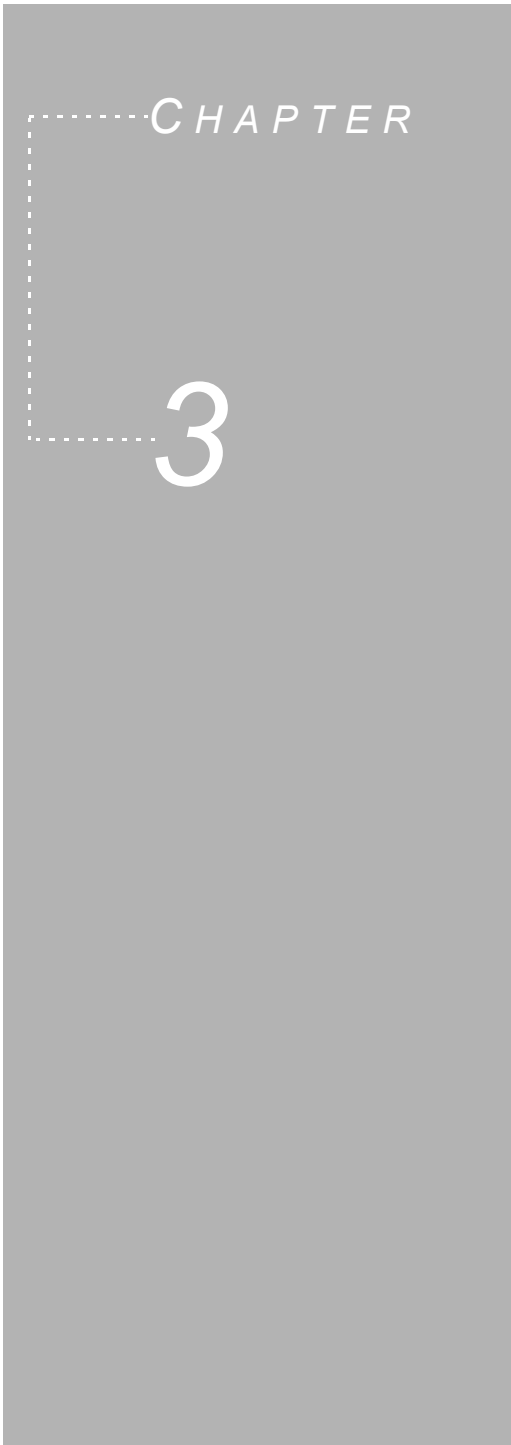
EXERCISES

These lessons are written so that they can be followed regardless of the type of device you are using (Pocket PC, Titan, Allegro, etc.).

Note to Pocket PC Users: Note that when the lesson refers to using up, down, left, and right arrow keys or the ENTER key, you should use the Navigation button at the bottom of the screen. Press the sides of the Navigation button for arrow keys and the center to run the currently selected button. When popup windows are in front of the **Pocket SMI** interface, the center of the Navigation button simulates the ENTER key.

In this chapter:

<i>Configure the Command Keys</i>	24
<i>Select a Command Favorites Menu</i>	25
<i>Use a Command Favorites Menu</i>	27



Configure the Command Keys

In this example, we will select a Command Key menu, which is a predefined group of commands to be assigned to the physical keys directly below the screen. The **SMI** Command Key assignments are only active while **SMI** is running. The name of the Command Key menu that we will assign in this example is "Command Favorites" because it contains shortcuts to the Command Favorites commands.

QuickSteps

1. **Pocket PC:**

Select **START** → **Classic SMI**, or press the voice record button on the side of the unit to start **SMI**. If you are already running **SMI** and you are viewing the **Pocket SMI** interface, tap the Switch User Interface icon to display the **Classic SMI** interface.



Non-Pocket PC:

Tap the Calculator icon.

2. **Pocket PC:**

Tap the Select Command Keys Menu icon on the status bar.



Non-Pocket PC:

Tap the Properties icon in the lower right corner of the screen.

This will display the Select Command Keys Menu dialog box.



Figure 3-1 Select Command Keys Menu Dialog Box

3. **Screen:**

Since we are going to select a predefined menu, tap on the Command Favorites menu.

Keyboard:

Use the up and down arrow keys to select Command Favorites and press ENTER.

This displays the Current Commands dialog box.

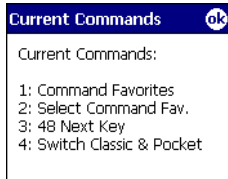


Figure 3-2 Current Commands Dialog Box

4. Tap OK or press the ENTER key to close the Current Commands window.

The current commands that are now mapped to the four buttons, or keys, below the screen should be as they are listed in this dialog box.

These commands allow you run some of the most common commands without the need to tap an icon or button on the screen to run the desired command.

Menus of commands can be created for both the Command Keys and Command Favorites, so you can switch to a new set of commands with just a couple of key presses. For more information about these features, refer to *Customize Command Keys/Customize Command Bar/Customize Command Favorites* on page 8.

Select a Command Favorites Menu

In this example, you will become familiar with selecting a Command Favorites menu. The Select Command Favorites Menu window can be started by pressing the Select Menu button in the Command Favorites window, but this example will demonstrate how to do it while avoiding using the touch screen.

QuickSteps

- 1. Make sure that the Command Favorites menu is assigned to the command keys as shown in *Configure the Command Keys* on page 24.**
- 2. Press the second command key from the left, which is assigned to the Select Command Favorites menu.**

This will display the Select Command Favorites Menu.

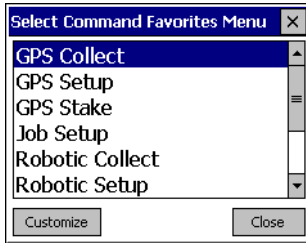


Figure 3-3 Select Command Favorites Menu

3. Use the up and down arrow keys to select the Job Setup menu and press the ENTER key.

This will automatically display the commands configured for this menu.

4. Use the up and down arrow keys to select the 48 New Job command.

Non-Pocket PC:

The JOB command is printed on the overlay for quicker access. The Command Favorites command is more useful for commands that are not on the overlay.

This will display the Create New Job screen.



Figure 3-4 Create New Job Screen

NEW

5. Tap on the New soft key located in the lower right portion of the screen.

Pocket PC:

An alternate method is to use the Navigation button to highlight the New soft key and press the center of the Navigation button to activate the New soft key.

The screen will display the prompt:

NEW JOB?

6. Type the word BOUNDARY.

Pocket PC:

Use the *Classic SMI* keyboard or the soft input panel options. For more information on these methods, see the Entering Characters section in the Getting Started chapter of the *SMI for Pocket PC User Guide*.

Non-Pocket PC:

Use the physical keyboard.

7. Tap the ENTER key to create the job BOUNDARY.

This will display the SETUP screen with the job name showing in the upper left corner.



Figure 3-5 Setup Screen

Use a Command Favorites Menu

In this example, you will become familiar with using a Command Favorites menu after it has already been selected as the current menu.

QuickSteps


1. Make sure that you have completed the steps in *Configure the Command Keys* on page 24 and *Select a Command Favorites Menu* on page 25.
2. Press the first command key, which is the first button from the left below the screen.

You can select any command from the list by tapping the screen to run the command or by using the arrow keys and ENTER key.



Figure 3-6 Command Favorites – Job Setup Menu

3. Tap or use the arrow keys and ENTER to run the 48 Occupied Point command.

 If you press and hold the arrow key, the highlight bar will move quickly down the list of commands.

The screen will display the prompt:

OCCUPIED POINT?

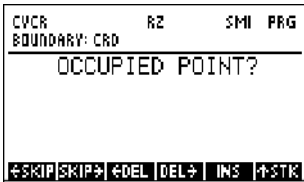


Figure 3-7 Occupied Point Prompt

4. Type the number 1.
5. Tap the ENTER key to accept the value.
6. Run the Command Favorites command like you did in step 2.
7. Tap the 48 Height of Rod command.

The screen will display the prompt:

HEIGHT ROD?



Figure 3-8 Height of Rod Prompt

8. Type 5 and press the ENTER key to accept the value.

INDEX

A

Abbreviation	6
Add	9
Add Command	9

C

Classic SMI Settings	7
Close	13, 16
Command Bar	3
Command Description Format	6
Command Favorites	7
Command Favorites Menu	7
Command Group	6
Command Tabs	4
Configure the Command Keys	24
QuickSteps	24
Current Menu	8
Customize Command Keys/ Customize Command Bar/Customize Command Favorites	8
Add Command	9
Add Command Window	9
Customize Command Menus	8

D

Delete	9
Display	12
Down Arrow	9
Download Geoid File	10
Geoid Transfer Screen	10

E

Elev. Mask	16
Exercises	23
Configure the Command Keys	24
Select a Command Favorites Menu	25
Use a Command Favorites Menu	27

G

Graphical Stakeout	11
Graphical Stakeout Screen	11

H

H. Error	15
HA Circle	14
HDOP	15

I

Inst. Battery	14
Instrument Status	13
GPS Status Window	15
Instrument Status (GPS Receiver)	15
Instrument Status (Total Station)	14
Instrument Status Dialog Box	14
Instrument Status (GPS Receiver)	15
Instrument Status (Total Station)	14

L

Location	6
----------------	---

N

New	9
Next Button	16

O

Options	12
Overview	2

P

Pocket SMI Commands	5
Classic SMI Settings	7
Command Favorites	7
Customize Command Keys/Customize Command Bar/Customize Command Favorites	8
Download Geoid File	10

Graphical Stakeout	11
Instrument Status	13
Next Button	16
Select Command Bar Menu	17
Select Command Favorites Menu	18
Select Command Keys Menu	19
Soft Key Commands	20
Switch Classic & Pocket	20
Use Geoid99	21
Pocket SMI Interface	1
Command Bar	3
Command Tabs	4
Overview	2
Status Bar	4
Title Bar	2
Product	6

R

Radio Latency	16
Remove	9
Rod at Center Toggle	12

S

Scale Bar	12
Select a Command Favorites Menu	25
QuickSteps	25
Select Command Bar Menu	17
Select Command Favorites Menu	18
Select Command Keys Menu	19
Setup	11
Sky View	15
Slope Distance	14
Soft Key Commands	20
Add Command – Program Settings	
Menu	20
Solution Type	15
Status	11
Status Bar	4
SV in sky	16
SV in use	16
SV in view	16
Switch Classic & Pocket	20

T

Text Output Area	12
Title Bar	2
Track Status	14

U

Up Arrow	9
Use a Command Favorites Menu	27
QuickSteps	27
Use Geoid99	21
Geoid Menu	21

V

V. Error	15
VDOP	15

Z

Zenith Angle	14
--------------	----